



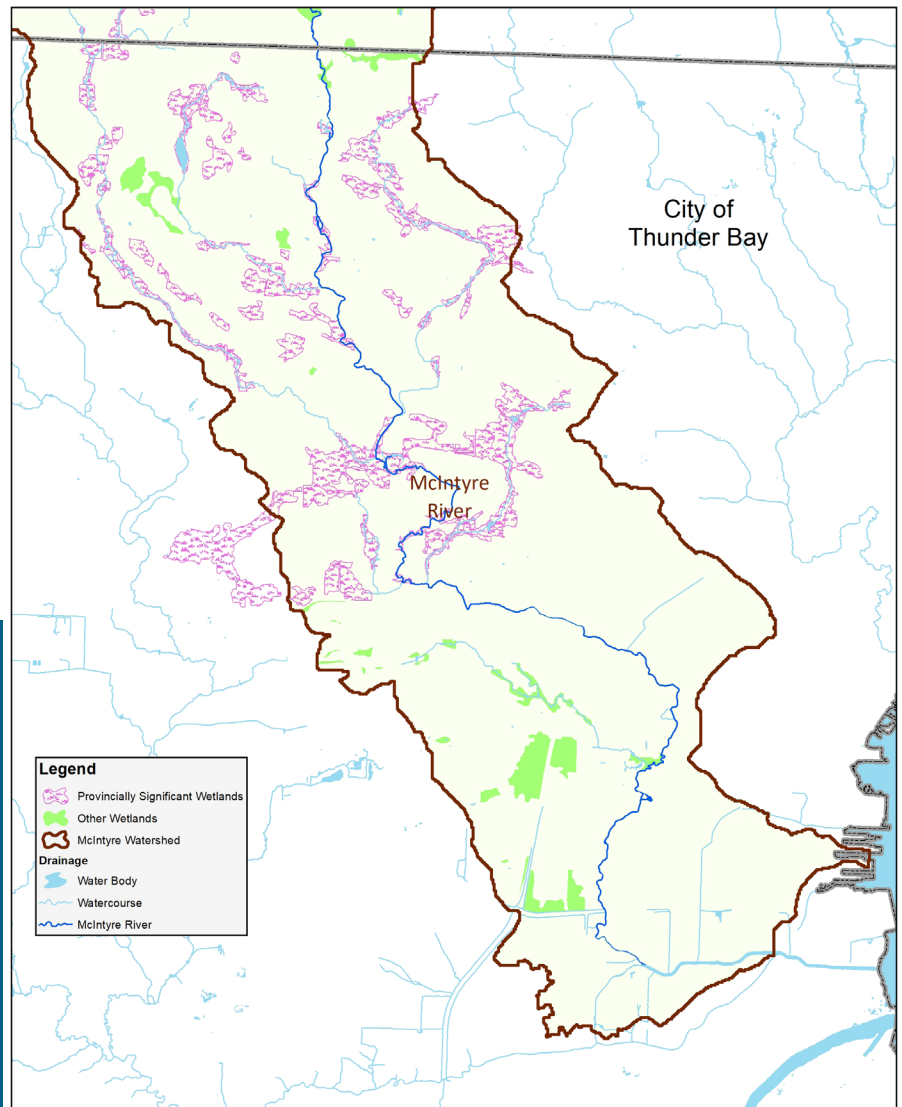
July, 2018

The McIntyre River watershed is located in the City of Thunder Bay and the unincorporated Townships of Gorham and Ware (Figure 1). The watershed extends 28 kilometres from Lake Superior north to Trout Lake and covers 15,400 hectares. The McIntyre River flows approximately through the middle of the watershed with numerous small unnamed tributaries draining in from the east and west. The southern portion of the watershed, approximately 20%, is urban with the remaining 80% in rural areas.

The wetlands were evaluated by a certified wetland evaluator following the Ontario Wetland Evaluation System Northern Manual (Ontario Ministry of Natural Resources 2013). Areas of wetland were identified from Forest Resource Inventory maps, Google Earth, and 2012 ortho-photograph obtained from the City of Thunder Bay.

Under the Ontario Wetland Evaluation System, wetlands are scored based on criteria and wetlands that score above 600 points are designated as Provincially Significant Wetlands (PSW) by the Ministry of Natural Resources and Forestry (MNRF). In the McIntyre watershed within Lakehead Region Conservation Authority (LRCA) Area of Jurisdiction the Kivikoski wetland complex was designated as a PSW by the MNRF with a score of 672 points.

Several smaller wetland complexes were also identified in the LRCA Area of Jurisdiction in the southern portion of the watershed; however, they did not score as a PSW.



McIntyre River Watershed Wetlands

Watershed Size	46.5 square kilometres
Length of River	29 kilometres
Kivikoski PSW Area	737 hectares
Kivikoski Wetland Score	672
Area of Other Wetlands (non-PSW) in LRCA Area of Jurisdiction	152 hectares
% Palustrine Wetland	74%
% Riverine Wetland	26%
% Swamp	87%
% Marsh	13%

Lakehead Region Conservation Authority Regulations:

The LRCA administers Ontario Regulation 180/06: Development, Interference with Wetlands and Alterations to Shorelines and Watercourses under the *Conservation Authorities Act* within its Area of Jurisdiction.

The Regulation states that no person shall undertake development or permit another person to undertake development in or on the areas within the jurisdiction of the LRCA that are wetlands, or areas where development could interfere with the hydrologic function of a wetland, including areas within 120 metres of all provincially significant wetlands and areas within 30 metres of wetlands (that are not designated as PSW). Development within these Regulated Areas may require a Permit from the Authority.



Conifer swamps make up over 60% of the Kivikoski Wetland.



Cedar swamps are found where there is shallow groundwater flow.

Importance of Wetlands:

Wetlands are among the most productive and diverse habitats on Earth. They serve as an important habitat to an array of birds, insects, amphibians, fish and other animals, including many species at risk. They also provide economic benefits and provide a high quality of life for people, including providing clean and abundant water, flood and erosion mitigation, climate moderation and recreational opportunities. Wetlands play an important role in protecting biodiversity and providing ecological services, including providing habitat for a variety of species and maintaining natural cycles (carbon, nutrients and water cycles) and climate systems.

Definitions:

Provincially Significant Wetland: Wetlands that are identified by the province as being the most valuable. They are determined by a science-based ranking system known as the Ontario Wetland Evaluation System.

Palustrine Wetlands: A system of inland, non-tidal wetlands that are characterized by the presence of trees, shrubs and emergent vegetation (vegetation that is rooted below water but grows at the surface).

Riverine Wetlands: Wetland systems that are found in floodplains and riparian zones associated with stream channels.

LRCA Area of Jurisdiction: The LRCA Area of jurisdiction includes the boundaries of its Member Municipalities: City of Thunder Bay, Municipalities of Oliver Paipoonge, Shuniah and Neebing, and Townships of Conmee, O'Connor, Gillies and Dorion.