

# MILLS BLOCK

FOREST


					
4.0 km of trails	284 ha of land	Parking	Photo Ops	Scenic Views	Active Wetlands

## Exceptional examples of rare orchids, wildflowers and fungi each year

Mills Block Forest is a 284 hectare forest that offers a 4 km hiking trail. Walk across an active beaver dam and watch for wildlife in the rich mixed forest. Mills Block Forest is the location of the LRCA's annual Fall Mushroom Hike.

Mills Block Forest is an extremely popular area for dog-walking. We urge all pet owners to keep your dogs on-leash at all-times while visiting, and that it is the pet-owner's responsibility to clean up after their pet.



 **DIRECTIONS:**  
Mills Block Forest is located at the corner of John Street Road and Community Hall Road. Follow John Street Road west for about 5.3 km. Mills Block Forest will be on the left.  
*Located within the City of Thunder Bay.*

(807) 344-5857 | [www.lakeheadca.com](http://www.lakeheadca.com) | [info@lakeheadca.com](mailto:info@lakeheadca.com)



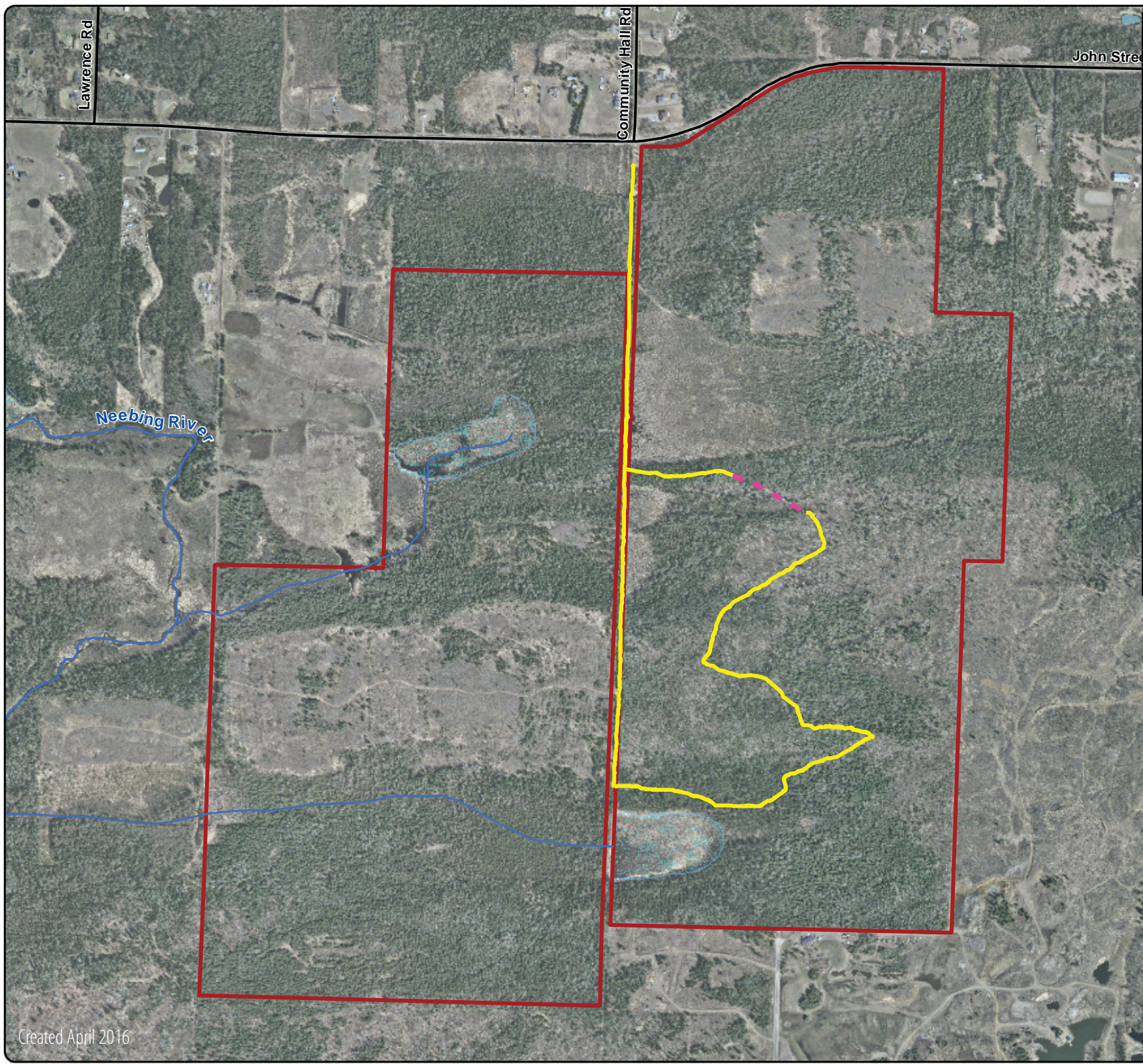
# LAKEHEAD REGION

CONSERVATION AUTHORITY



# MILLS BLOCK

FOREST



### Mills Block Forest Land



**Legend**

- Boardwalk - 193 m
- Dirt - 3427 m
- LRCA Lands
- Road

**Drainage**

- Water Body
- Wetland
- Streams



1:12,000

This publication was produced by:  
Lakehead Region Conservation Authority  
130 Conservation Rd.  
Thunder Bay, ON  
P7B 6T8

Base data used under license through the members of  
the Ontario Geospatial Data Exchange.

This map is illustrative only. Do not rely on it as being a  
precise indicator of routes or features, nor as a guide to  
navigation.

Datum: NAD 83  
Projection: UTM Zone 16N  
Date: October 2015

Copyright 2015, LRCA