



LAKEHEAD REGION  
CONSERVATION AUTHORITY



# 2014 ANNUAL REPORT

*Conserve Today...  
For A Better Tomorrow*





### LAKEHEAD REGION CONSERVATION AUTHORITY

The Lakehead Region Conservation Authority (LRCA) is a community-based environmental agency. We are responsible for the wise management of renewable natural resources in our watershed. Conservation Authorities undertake a broad range of programs, including: watershed management, erosion control, flood forecasting & warning, recreation, water level monitoring, plan input & review, environmental education and stewardship.

#### BOARD MEMBERS:

- Bill Bartley– Chair/City of Thunder Bay
- Donna Blunt- Vice-Chair/Municipality of Shuniah
- Grant Arnold– Township of Conmee
- Ed Chambers– Township of Dorion
- Linda Turk– Township of Gillies
- Ziggy Polkowski– Municipality of Neebing
- Jim Vezina– Township of O'Connor
- Eric Collingwood– Municipality of Oliver Paipoonge
- Ken Boshcoff– City of Thunder Bay
- Umed Panu– City of Thunder Bay
- Linda Rydholm– City of Thunder Bay

#### STAFF:

- Mervi Henttonen– General Manager/Secretary-Treasurer
- Tammy Cook– Watershed Manager
- Mark Ambrose- Finance Manager
- Ryne Gilliam– Field Operations Supervisor
- Michelle Sixsmith– Water Resources Technologist
- Ryan Mackett– Community Stewardship/Public Relations Officer
- Norma Hunt– Financial Assistant
- Melanie O'Riley– Administrative Assistant
- Roman Augustyn– SWP GIS/Data Specialist
- Scott Drebit– GIS Technician/Planner
- Erin Moir– Environmental Education & Outreach Coordinator (Contract)
- Don Allin– Development Regulations Officer (Contract)

*Various seasonal, contract and intern positions are also filled as needed, on an annual basis.*

The Lakehead Region Conservation Authority (LRCA) was proud to celebrate its 60th anniversary in 2014. As part of the celebrations, a rare photo opportunity presented itself: four former LRCA Chairs along with current Chair Bill Bartley gathered together for the photo seen below. The Chairs pictured are as follows from left to right: David Dowhos (1977-1978); Bob Hartley (1979-1988); Steven Lukinuk (1963); Bill Bartley (2002 - present); and Rick Potter (1989-2001). Not pictured are former Chairs R.B. Wilmot (1964-1965), W.A. Nealin (1966-1967), K.W. Hearnden (1968-1972) and A.P. Sewchuck (1973-1977).

A little history: in 1941, the region was hit by a fierce storm which caused extensive flooding on the Neebing River. The flood waters rose to the point where they overflowed into the McIntyre River. In an attempt to deal with flooding problems, the Neebing Valley Conservation Authority (NVCA) was created in 1954. In 1963, as a result of expansion, the NVCA became the Lakehead Region Conservation Authority (LRCA).

2014 also marked the 40th anniversary of the LRCA's current Administrative Office location at 130 Conservation Road which underwent renovations this past year. Smart Boards were added to the Board Room and Multi-Purpose Room, which are both available to rent (contact us for more information). Beautiful artwork was also added to both sides of the main entrance and on the front of the building; landscaping has also occurred on the grounds in 2014, with completion in 2015.

Several events were hosted in 2014 in celebration of these milestones, including a well-attended public open house. Mayor Keith Hobbs presented LRCA Chair Bill Bartley with a congratulatory certificate on behalf of the City of Thunder Bay in recognition of the LRCA's 60th anniversary.

The Lakehead Region Conservation Authority is extremely proud of the work it has done over the past 60 years, and very much looks forward to working with the residents of the Lakehead Region Watershed. Watersheds are all connected, as are the residents who reside within them. No one person or entity can ensure the health and vibrancy of a watershed; we all must work together for the benefit of the watershed connections that are vital to our survival and way of life.



From left to right: David Dowhos (Chair from 1977-1978); Bob Hartley (Chair from 1979-1988); Steven Lukinuk (Chair from 1963); Bill Bartley (Chair from 2002 - present); and Rick Potter (Chair from 1989-2001).



## NEEBING-MCINTYRE FLOODWAY

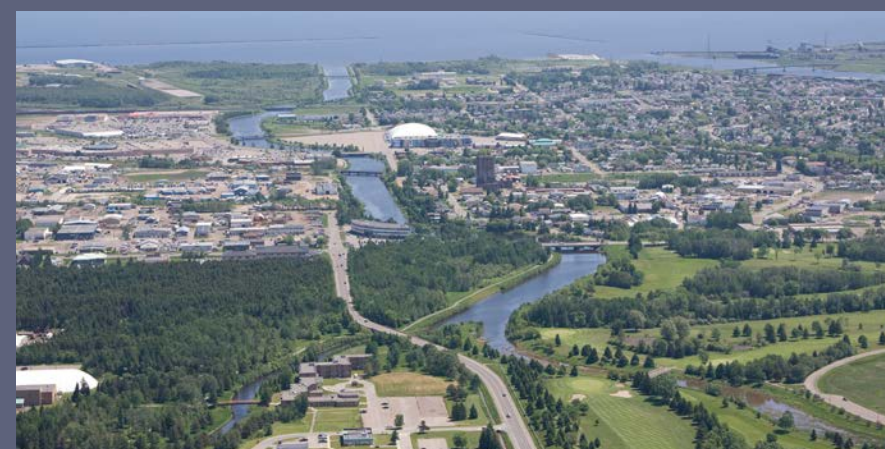
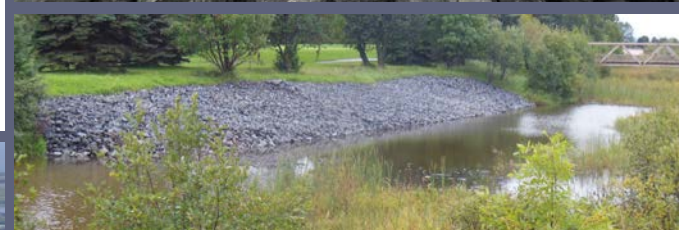
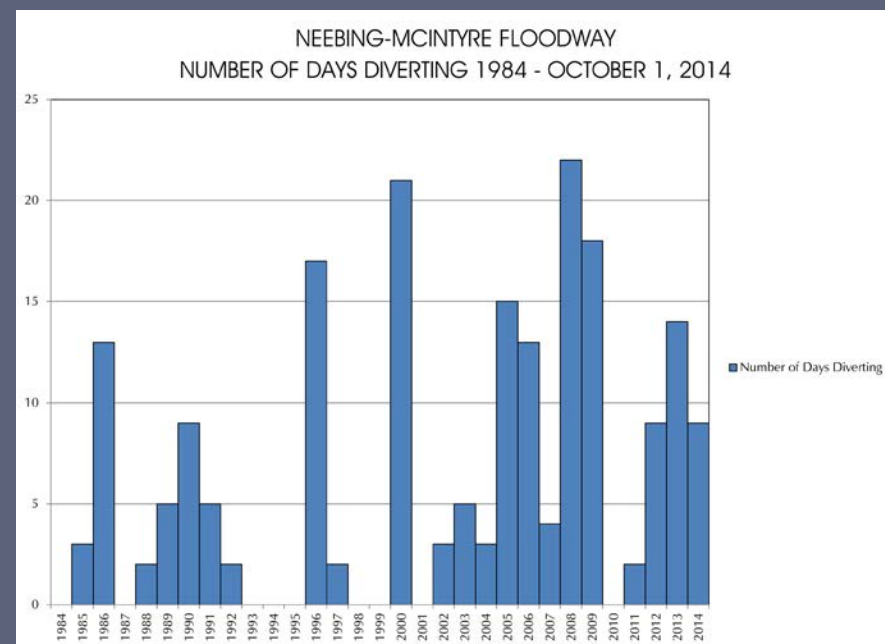
The Neebing-McIntyre Floodway consists of three main components: the Diversion Structure; the Diversion Channel; and the widened and deepened Floodway that outlets into Lake Superior. The purpose of this engineering marvel is to provide riverine flood protection to the lower Neebing River and Intercity area.

The Neebing-McIntyre Floodway does not need to be turned on in order to operate. Everything works automatically. During high water events the Floodway operates without any required actions. The Diversion Structure limits flows down the lower Neebing River and diverts excess flows into the 1.5 km Diversion Channel which directs excess flows to the widened, deepened Floodway to Lake Superior. As part of the Floodway's operation, maintenance dredging needs to occur every 20 years or so, depending on sediment buildup. Two sediment traps are also required to be emptied about every 7 years or so. This maintenance ensures that the Floodway remains operational and capable of handling rainfall up to and including the Regional Storm. The LRCA also hires two seasonal staff annually to undertake routine Floodway maintenance such as grass cutting, brushing, etc.

At 30 years old, the Neebing-McIntyre Floodway is an invaluable community resource. In addition to the riverine flood protection of the lower Neebing River and Intercity area, the over 38 hectares of land that comprises the Neebing-McIntyre Floodway has grown to include activities such as canoeing and kayaking, and the pedestrian trails provide the community with the opportunity to pursue a healthy lifestyle. The LRCA also utilizes the Floodway for educational purposes, and will be conducting a guided hike of the Floodway in 2015.

During 2014 the Neebing-McIntyre Floodway diverted flow for a total of 9 days during spring freshet and two rainfall events. In 2014 the Neebing-McIntyre Floodway Integrity Evaluation Study was completed. This study reviewed the current condition of the Floodway and the ability of the Floodway to provide flood protection to the lower Neebing River and Intercity area up to and including the design criteria of the Regional Storm. The completed review concluded that the Floodway continues to provide the designed level of protection and that the Floodway is in very good condition.

In 2014 a repair was completed on a section of eroded bank in the Diversion Channel. Approximately 75 metres of bank within the Diversion Channel was re-graded to a stable slope and overlain with rip-rap. In addition the rock apron at the end of the Diversion Channel at the confluence with the McIntyre River and Floodway Channel was re-instated with rip-rap rock.



## AROUND THE WATERSHED

The Private Landowners Tree Seedling Assistance Program was a success in 2014, with a total of 95 orders received. This amounted to 9,808 tree seedlings being sold. As a result of the program, approximately 106,219 seedlings have been planted in the Lakehead Region Watershed since the program's inception in 2009. The LRCA would like to thank the generous support of Hydro One in 2014 for their contribution to the program. The program will be offered in 2015 once again with the generous support of Hill's Greenhouses.

Annually, a Watershed Assessment of a local river or stream is conducted by staff. In 2014, the Cloud River Watershed was studied. The watershed covers 79.5 square kilometres within the Municipality of Neebing (Geographic Townships of Crooks, Blake, Pearson and Pardee). At the time of assessment, the Cloud River Watershed was considered to be in good health. The full report can be accessed from the Authority website, in addition to studies from prior years conducted on the MacKenzie River, Whitefish River, Pine River, Cedar Creek, Corbett Creek, Pennock Creek, Blind and Wild Goose Creek, Welch Creek, Brule Creek, Slate River and Wolf River Watersheds. In 2015, Oliver Creek and Mosquito Creek Watersheds will undergo Watershed Assessments.

Hazelwood Lake Conservation Area did not have any beach advisory's posted in 2014. The last time a beach advisory was posted was in 2007.

In partnership with the Ministry of the Environment & Climate Change, the LRCA monitors nine wells throughout the watershed as part of the Provincial Groundwater Monitoring Network. The wells record groundwater levels every hour and are sampled for water quality once per year. Data is used to monitor the groundwater conditions in the area. The LRCA also monitors the water quality of five area watercourses: McVicar Creek, McIntyre River, Current River, Slate River and Neebing River. Water samples are collected and analyzed monthly at the Ministry of Environment & Climate Change laboratory during the ice free period. Data is used to monitor the long term water quality of the sampled streams. The data will also be used to update The Lakehead Watershed Report Card which is updated every 5 years.

The LRCA has undertaken considerable efforts to stabilize the slopes of the Kaministiquia River along Victor Street over the years. Projects included: acquisition of at risk properties, sheet steel pile wall installation, rip rap placement at the toe of slope, Soil Nail and Root Technology (SNART) installations, all in conjunction with annual monitoring of the area. Due to the nature of the area, erosion has and will continue to occur along the banks of the Kaministiquia River.

Due to this on-going active erosion, the LRCA undertook soil nailing (SNART) at three additional locations in 2014. This technology was once again chosen as it has proven to work in this area. Five sites were remediated successfully in 2005 using this method, which have not experienced any further erosion. Annual monitoring has detected limited movement of the previously secured sites over the past 10 years.



## SOURCE WATER PROTECTION

Source Water Protection is implemented under the *Clean Water Act* by Conservation Authorities in the Province of Ontario to ensure municipal sources of drinking water are protected. The Lakehead Source Protection Plan was the first approved Plan in the Province, which applies to the City of Thunder Bay Bare Point Drinking Water System and the Rosslyn Village Drinking Water System in the Municipality of Oliver Paipoonge. The Plan was approved on January 16, 2013 with an effective date of October 1, 2013. The Source Protection Plan contains a series of policies developed by the Source Protection Committee in consultation with the local community to protect municipal drinking water sources from existing and future drinking water threats. Implementing bodies were required to submit their first Annual Report to the Source Protection Authority by February 1, 2014, with subsequent reports due annually. The Annual Reports are a tool to ensure that the policies in the Plan are being met.

PLANNING & REGULATION

The LRCA is responsible for developing and maintaining programs that will protect life and property from natural hazards such as riverine flooding and erosion and to conserve and enhance natural resources. In this effort, Ontario Regulation 180/06 regulates development in areas where the control of flooding, erosion, pollution or conservation of land may be affected.

If you are planning on doing any type of work near a lake, river, stream, steep slope or wetland within the LRCA Area of Jurisdiction, a permit from the LRCA may be required.

As of November 2014, a total of ## permits were issued. Property owners are advised to submit applications as early as possible to allow for adequate evaluation and permit processing time. Contact us for more information.

As part of its delegated responsibility, the LRCA reviews all *Planning Act* applications on behalf of its Member Municipalities to provide comments related to natural hazards. In 2014, comments were provided on ### *Planning Act* applications (as of November 2014).



FLOODPLAIN MAPPING & GIS SERVICES

In 2014 the LRCA began the process of updating existing floodplain mapping within the City of Thunder Bay. The multi-year project began with the McIntyre River.

The historical mapping which depicts the Regional Storm floodplain or 100 year floodplain (i.e. the area underwater during the storm event) was originally completed between 1979 and 1985. The mapping is used during the administration of the Authority's Development, Interference with Wetlands and Alterations to Shorelines and Watercourses Ontario Regulation 180/06. It is also used by the City of Thunder Bay for planning and engineering purposes.

The project will update the existing models and maps to current standards using state of the art modelling, GIS (Geographic Information Systems) techniques and the collection of LiDAR based topography as the base information for the study. The modelling also takes into account changes to structures (i.e. culverts and bridges, etc.), rainfall, soils and land uses, etc. An Open House will be conducted in 2015 to present the updated mapping to the public.

The LRCA utilizes GIS technology for the in-house creation of high quality maps of various types, which are then used by Staff for various purposes and projects. GIS enables LRCA Staff to better administer Development Regulations, as well as to create accurate trail maps, site maps, informational maps for the general public, provide mapping services to Member Municipalities, monitor rates of erosion and much more.



FLOOD FORECASTING & WATER LEVEL MONITORING

The LRCA monitors daily watershed conditions which help provide advance warning of high water levels, and in times of drought, low water levels. Depending on the severity of the weather and how high the water levels are, a Watershed Conditions Statement (Water Safety or Flood Outlook), Flood Watch or Flood Warning is issued to our Member Municipalities, emergency staff and the local media. During 2014, four Watershed Conditions Statements were issued, three during spring freshet and one in July.

The LRCA also conducts snow surveys between November and May. Snow depth and weight (water content) are collected and forwarded to the MNR's Surface Water Monitoring Centre as part of the Flood Forecasting Program.

Although large amounts of snow fell in 2014, the spring weather made for an ideal spring melt: warm days and cooler evenings allowed the snow to melt at a manageable rate.

As of the beginning of November Lake Superior was 22 centimetres above the beginning of month average, and was 29 centimetres above the level one year prior. The Lake is approximately 19 centimetres below the 100 year flood level, which was observed in 1986, compared to record low lake levels observed in 2007.



In Ontario the monitoring of weather and flood conditions is a shared responsibility of Conservation Authorities, Ontario Ministry of Natural Resources & Forestry (MNRF) and Environment Canada. MNRF monitors flows and levels of watercourses and weather forecasts at a Provincial level and issues Conservation Authorities provincial flood messages. Conservation Authorities monitor flows and levels on watercourses and weather forecasts within their area of jurisdiction at the local level. Environment Canada monitors the weather and provides weather forecasts to the public and agencies.

When warranted, based on the local analysis, Flood Messages related to possible or occurring riverine flooding are issued by the Lakehead Region Conservation Authority (LRCA) for the Authority's Area of Jurisdiction. MNR Districts provide this service to areas not covered by Conservation Authorities.

The LRCA Flood Warning System operates most effectively with significant rainfall events with at least 12 hours forecast time. It is not designed to predict flood warnings as a result of high intensity, short duration thunderstorms.

There are three levels of Flood Messages issued by the LRCA: Watershed Conditions Statements (Water Safety and Flood Outlook), Flood Watch and Flood Warning (see below chart for more detailed information).

FLOOD MESSAGING ISSUED BY THE LRCA

	<p><b>NORMAL:</b> Conditions are within NORMAL limits. No flooding is expected.</p>
	<p><b>WATERSHED CONDITIONS STATEMENT - WATER SAFETY:</b> High flows, unsafe banks, melting ice or other factors could be dangerous for recreational users such as anglers, canoeists, hikers, children, pets, etc. Flooding is not expected.</p>
	<p><b>WATERSHED CONDITIONS STATEMENT - FLOOD OUTLOOK:</b> Early notice of the potential for flooding based on weather forecasts calling for heavy rain, snow melt, high wind or other conditions.</p>
	<p><b>FLOOD WATCH:</b> Indicates that there is the <u>potential</u> for flooding within specific watercourses and municipalities.</p>
	<p><b>FLOOD WARNING:</b> Indicates that <u>flooding is imminent or occurring</u> within specific watercourses and municipalities.</p>

THE DIFFERENCE BETWEEN LRCA FLOOD MESSAGES AND ENVIRONMENT CANADA WEATHER STATEMENTS

Environment Canada also issues Weather Statements to the public which are based on their public alerting criteria and use some of the same wording; however, these statements are based on their specific weather related criteria. Some examples include:

- **SHORT DURATION RAINFALL EVENT WARNING:** Issued when 50 mm or more of rain is expected within one hour.
- **RAINFALL WARNING SUMMER:** Issued when 50 mm or more of rain is expected within 24 hours; or when 75 mm of rain is expected within 48 hours.
- **RAINFALL WARNING WINTER:** Issued when 25 mm or more of rain is expected within 24 hours.
- **SEVERE THUNDERSTORM WATCH:** When conditions are favourable for the development of severe thunderstorms with one or more of the following conditions: wind gusts of 90 km/hr or greater; hail of two cm or larger in diameter; or heavy rainfall, per rainfall criteria (excluding winter).
- **SEVERE THUNDERSTORM WARNING:** When there is evidence based on radar, satellite pictures, or from a reliable weather spotter that any one or more of the above listed conditions in the "severe thunderstorm watch" are imminent or occurring.

Even though Environment Canada has issued a rainfall or severe thunderstorm watch or warning, the rainfall amounts may not result in riverine flooding; therefore, the LRCA will not issue a Flood Message related to the rainfall event.

CONSERVATION AREAS

Mission Island Marsh\*  
Cedar Falls  
Cascades  
MacKenzie Point\*

Hazelwood Lake  
Little Trout Bay\*  
Hurkett Cove\*  
Silver Harbour\*

Our Conservation Areas offer:

- \*5 access points to Lake Superior; boat launches at Silver Harbour and Little Trout Bay
- Over 22 km of trails on over 2,500 hectares of Conservation Lands
- Picnic shelters, pavilions, interpretive panels, outdoor privies and barbecue grills (at certain Areas)

The LRCA pays property taxes on its Conservation Lands, and is required to carry liability insurance on those properties. Explore Card sales and \$2.00 per vehicle parking fees help offset the costs of owning, operating and maintaining these beautiful Conservation Areas.

Unique trails await you at Mission Island Marsh, Cedar Falls, Cascades, Hazelwood Lake, Little Trout Bay and Hurkett Cove Conservation Areas. The trails at each of these Areas offer their own distinct qualities, and range from a short stroll through the woods to a longer hike over picturesque terrain. Snowshoeing is also popular at several Areas, so don't let the cold weather keep you from exploring!

We would like to remind visitors that there are certain Regulations in place to ensure the safety and well-being of our visitors, as well as to protect the environmental health of the Areas. Please visit our website for a full listing of the Conservation Areas Regulations.

Let's keep Conservation Areas safe, clean and fun for everyone!



AREAS UPDATE

The LRCA was the recipient of a Great Lakes Guardian Community Fund grant in 2014 for work done at Hurkett Cove Conservation Area. These funds were used to install boardwalks along sections of the trail, as well as to plant native vegetation in select spots around the area. The planting portion of the project occurred on Wednesday, October 1 and was carried out by LRCA Staff along with volunteers from Thunder Bay and Dorion, as well as members of Dorion's Canyon Country Birding Festival. The boardwalks were constructed by LRCA Staff.

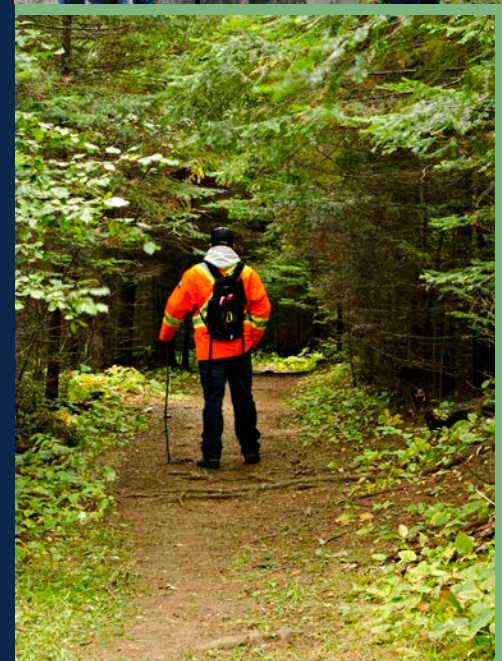
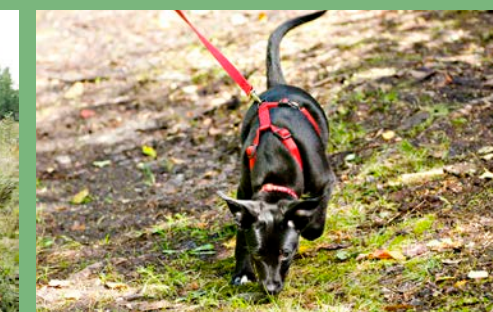
Boardwalks and other trail improvements were made along the Forest Community Trail at Hazelwood Lake Conservation Area. Some floating boardwalks were constructed, along with sections of crusher fines and small rocks in an effort to increase drainage along wet spots of the trail. Lumber for this project was salvaged from the deck that was attached to the former Education Cabin that burned down in 2012.

Hazelwood Lake Conservation Area also saw a series of interpretive panels and trail signs designed, fabricated and installed in 2014. A new trail head sign and five interpretive panels were installed along the Forest Community Trail; a large trail systems sign was replaced in the parking lot area and an interpretive panel was installed at the head of the Dam Trail.

Events held at LRCA-owned properties in 2014 included: Day One of the Dorion Bird Festival at Hurkett Cove Conservation Area; an open house at our Administrative Office; Cascades Canine Night in July; the Fall Mushroom Hike at Mills Block Forest in September and Waterfowl Viewing Day at Mission Island Marsh Conservation Area in October.

A set of new traffic counters were deployed in 5 select Conservation Areas during 2014. Knowing the number of visitors utilizing Conservation Areas each year provides the LRCA with valuable data. This is used when applying for grants and other funding, as well as helps to prioritize how funding is distributed amongst Conservation Areas. Between June 1 and October 31, 2014, there were approximately 135,366 visits to those 5 Conservation Areas (61,530 vehicles multiplied by an average of 2.2 people per vehicle). The LRCA relies on Explore Card Parking Pass sales (\$30.00 +HST per vehicle) to help offset the cost of Areas maintenance; if even 10% of the vehicles visiting those 5 Conservation Areas purchased an Explore Card, \$184,590.00 could be utilized to enhance, update and maintain the Areas. Imagine the possibilities of what could be accomplished with that kind of support! Currently the LRCA collects an average of about \$5,000.00 per year in Explore Card sales.

Each summer the LRCA employs four summer students and two seasonal staff. The summer student Conservation Areas Maintenance crew was busy all summer maintaining the Areas, while the River Clean-Up crew kept LRCA-owned properties along rivers and watercourses within the City of Thunder Bay looking sharp. In addition, summer students also assisted with bathing beach studies at Hazelwood Lake, conducted the Cloud River Watershed Assessment, as well as assisting with special events and education programming. One of the big projects each summer is pulling garbage out of the Floodway and rivers along LRCA-owned properties. This summer, LRCA Staff removed over 2,200 kg of unnatural debris from rivers in the City, including Styrofoam, 5 tires, numerous alcohol containers and other bottles. In addition, 11 shopping carts were also removed. A big thank you to the seasonal staff and summer students who worked hard keeping our Areas clean!



## PARTNERSHIPS & VOLUNTEERS

Partnerships are one of the ways which enable the LRCA to accomplish many valuable projects in the watershed.

Ontario Power Generation (OPG) is a generous supporter of the LRCA, contributing to projects such as the Mission Marsh Learning Trails, Fall Waterfowl Viewing Day, the Lakehead Children's Water Festival and Mission Marsh's viewing scopes. These contributions are greatly appreciated.

The 2014 Lakehead Children's Water Festival was also generously sponsored by the City of Thunder Bay and Eat Local Pizza and Pastry.

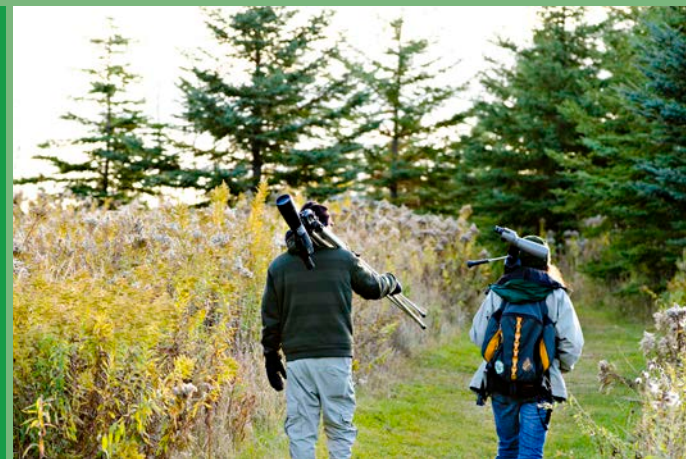
Along with their contributions to the Tree Seeding Assistance Program, Hydro One also sponsored and participated in the LRCA's Arbour Week activities.

The Thunder Bay Field Naturalists assist the LRCA with Fall Waterfowl Viewing Day. Dr. Leonard Hutchison of Lakehead University also assists with the LRCA's Fall Mushroom Workshop, which fills up quickly every year.

Once again, a special thank you to these and other sponsors that assist the LRCA throughout the year.

The LRCA greatly values our volunteer community. Our volunteers are made up of community members, employees of sponsoring businesses, local retirees, university and high school students, 55+ Centre members, etc. These volunteers assist the LRCA with data collection (Community Collaborative Rain, Hail & Snow Network "CoCoRaHS"), our environmental education programs and the Annual Conservation Dinner & Auction. Volunteer opportunities vary throughout the year depending on programs, projects, and funding allocations.

**Please call our office if you are interested in volunteering!**



## ENVIRONMENTAL EDUCATION

The LRCA's Environmental Education Program saw Staff conduct interpretive programs throughout 2014 dealing with subjects such as orienteering, biodiversity, insects, animal tracking, pond studies and many other interesting and informative topics. Participants are engaged through hands-on, outdoor experiences and "in-class" presentations that promote environmental stewardship and healthy, active living; programs are booked by teachers and community group leaders for their classes and groups. Programs can take place in a Living Classroom (Conservation Area), along the Neebing-McIntyre Floodway and "in-class" (i.e. at a school, library, recreation centre or in the LRCA's Multi-Purpose Room).

The purpose of these programs is to reach as many community members as possible in an effort to spread the message of conservation; to deliver quality, Ontario Curriculum-based programming; to stress the importance of our natural environment; and to ignite an interest and deep appreciation for environmental stewardship. It is through exploring the natural world that people will fully understand the delicate balance of nature and learn to take care of that balance. Remember, our programming is not just for children! Contact us for information about how your group may benefit from one of our programs!

**The following statistics are representative of the LRCA's programming offered to schools and user groups within the Watershed:**

- The 2014 LRCA Spring Water Awareness Program reached 194 students from 6 schools
- The 2014 LRCA Arbour Week programming reached 289 students from 10 schools
- The 2014 Lakehead Children's Water Festival reached 398 students from 12 schools; since 2006 the Water Festival has reached over 4,000 students
- In addition to the 881 students that participated in the above-mentioned complimentary programming, an additional 914 participants from 16 different user groups visited Conservation Areas through our Environmental Education & Outreach Programming
- A grand total of 1,795 participants took advantage of the LRCA's Environmental Education Programming in 2014



## LAKEHEAD CONSERVATION FOUNDATION

The Lakehead Conservation Foundation (LCF) raises funds for the Lakehead Region Conservation Authority, specifically for the LRCA's Environmental Education programming. The funds are raised through several events held during the year, including the Annual Conservation Dinner & Auction.

The 2014 Fundraising Dinner & Auction was held on February 6, 2014 and raised over \$24,000.00. Tickets for the 2015 Conservation Dinner & Auction, to be held on February 5, 2015, are on sale now. Contact the Authority office for your tickets as soon as possible, as they sell out each year.

LCF President Andrea Goold presented Authority Chair Bill Bartley with a cheque for \$25,000.00 for the LRCA Environmental Education Program at this year's annual LCF cheque presentation (pictured below).

If you or someone you know is interested in volunteering or becoming a Foundation Member, contact the LCF at (807) 345-2377.



### LCF MEMBERS:

Andrea Goold- President  
Shelly Brown- Vice-President  
Melody Lundstrom- Secretary  
Mary Provenzano- Treasurer  
Doug Guinn  
Marlene Jarvis  
Phil Jarvis  
Ron Miller  
Simon Shankie



The Living Classroom Fund provides supporters with the opportunity to help fund the LRCA's education and stewardship programming. Conservation Areas are the perfect Living Classrooms: visitors are surrounded by the many learning and recreational opportunities offered by the natural world.

The Fund is designed to help support the LRCA's environmental education and stewardship programs, as well as to ensure that the Areas are maintained and kept safe and clean for all users.

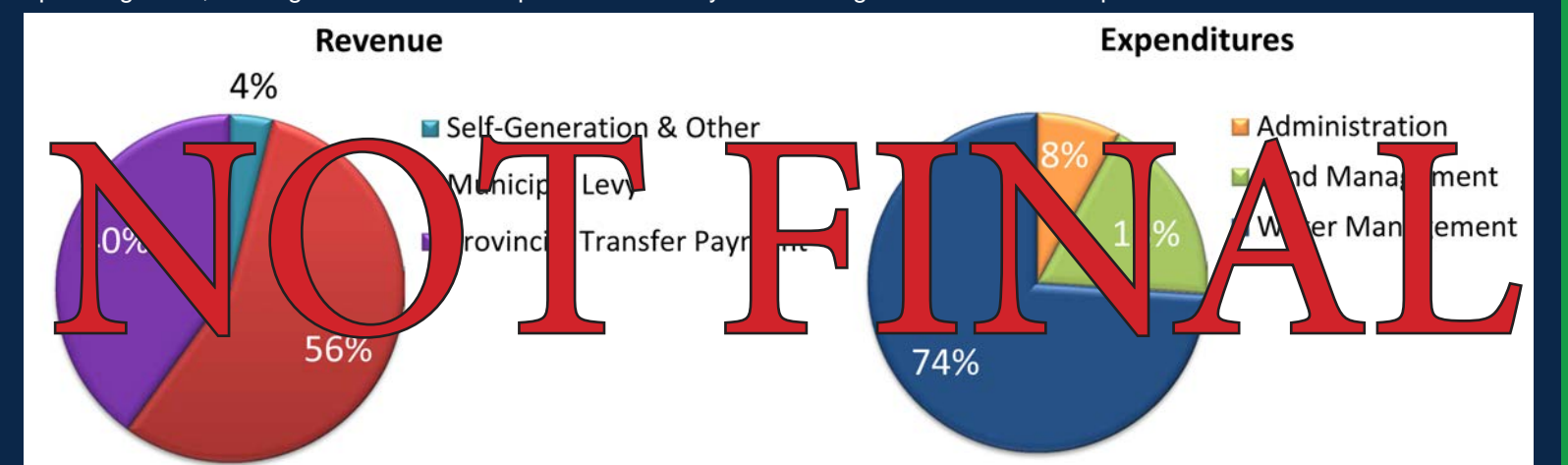
The recommended minimum donation amount is \$30.00, but donations can be made in any amount you choose. Donations can be made in memory of a loved one, as a gift for a friend or family member in their name or simply as generous support of our initiatives.

**For more information, please visit our website or contact our Administrative Office at (807) 344-5857.**

## 2014 FINANCIAL REPORT

The LRCA's budgeted 2014 revenue and expenditures totaled approximately \$#####. Revenue is derived from three primary sources: Provincial/Federal Government Grants, Municipal levies and self-generation (comprised of user and parking fees, partnerships, donations and sponsorships). Source Water Protection activities are 100% Government funded. The LRCA gratefully acknowledges the support of clubs, agencies and businesses, the Lakehead Conservation Foundation and individuals making direct donations for making 2014 a successful year. The LRCA relies on grants, donations and other outside funding for its Environmental Education Program, and as such certain public events have fees attached. The LRCA is a registered charity, capable of issuing charitable tax receipts.

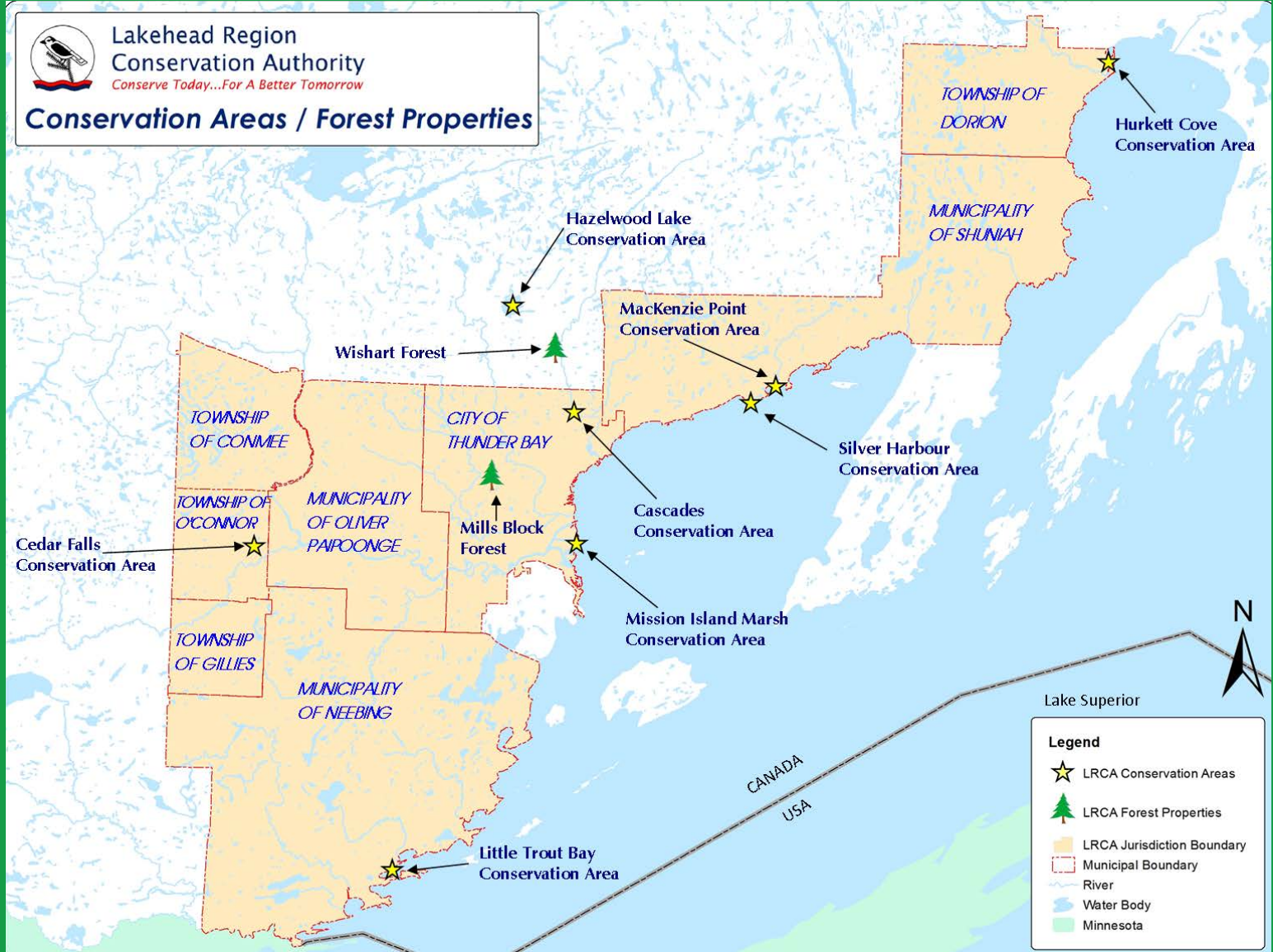
2014 was a historic year for the LRCA, and it is important to note that the time donated by volunteers is not factored into our operating costs, although their time and expertise is formally acknowledged in this Annual Report.





Lakehead Region  
Conservation Authority  
*Conserve Today...For A Better Tomorrow*

## Conservation Areas / Forest Properties



**Legend**

- ★ LRCA Conservation Areas
- 🌲 LRCA Forest Properties
- ▭ LRCA Jurisdiction Boundary
- ▭ Municipal Boundary
- River
- Water Body
- Minnesota

*“Take nothing but pictures, leave nothing but footprints!”*



(807) 344-5857 | [www.lakeheadca.com](http://www.lakeheadca.com) | [info@lakeheadca.com](mailto:info@lakeheadca.com)



130 Conservation Road; P.O. Box 10427  
Thunder Bay ON P7B 6T8

LRCA ESTABLISHED 1954

