



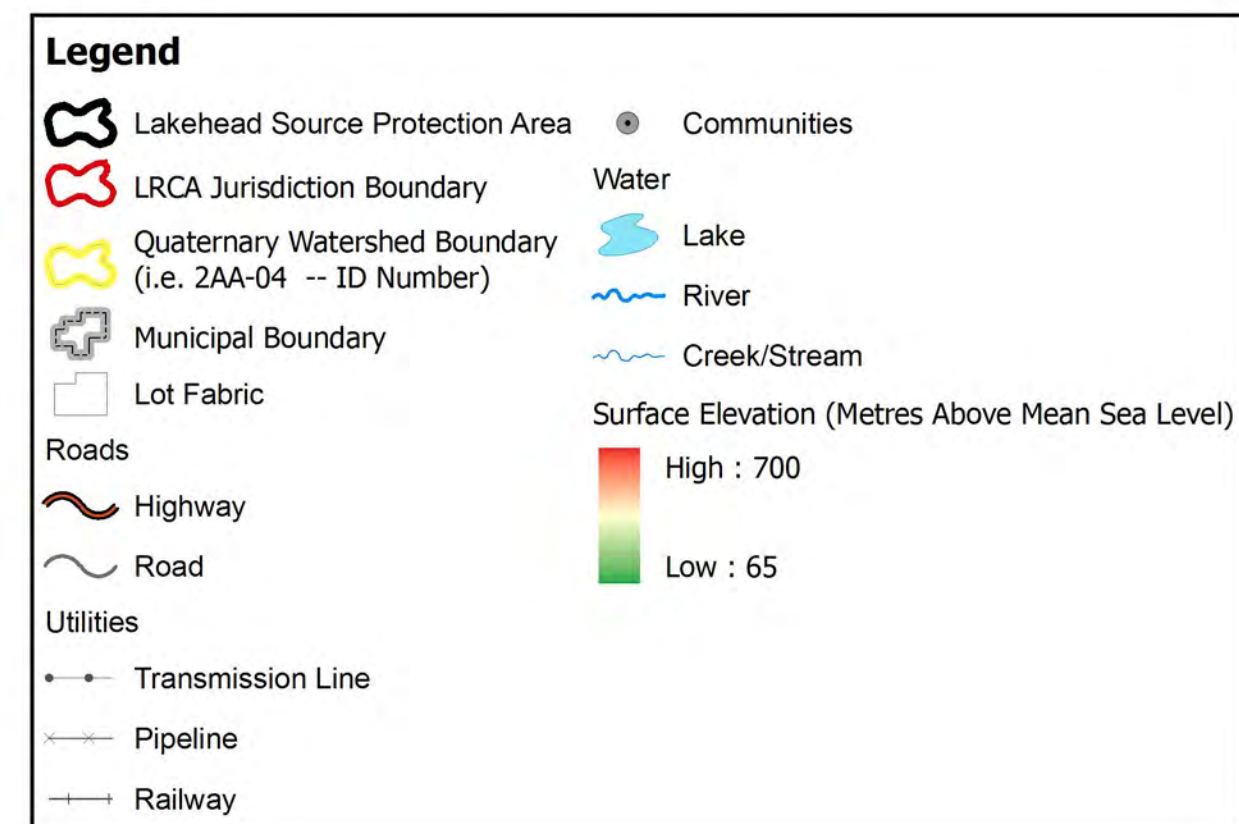
Map #1 Watershed Characterization
Lakehead Source Protection Area Boundary

This publication was produced by:
Lakehead Region Conservation Authority (LRCA)
130 Conservation Road
Thunder Bay, ON, P7B 6T8
807-344-5857

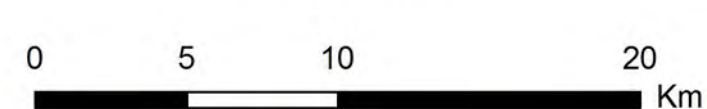
© 2008 Lakehead Region Conservation Authority. All Rights Reserved.

Base Data supplied under Licence by Members of the Ontario Geospatial Data Exchange.
Map Produced in Co-Operation with the Province of Ontario
and Conservation Ontario

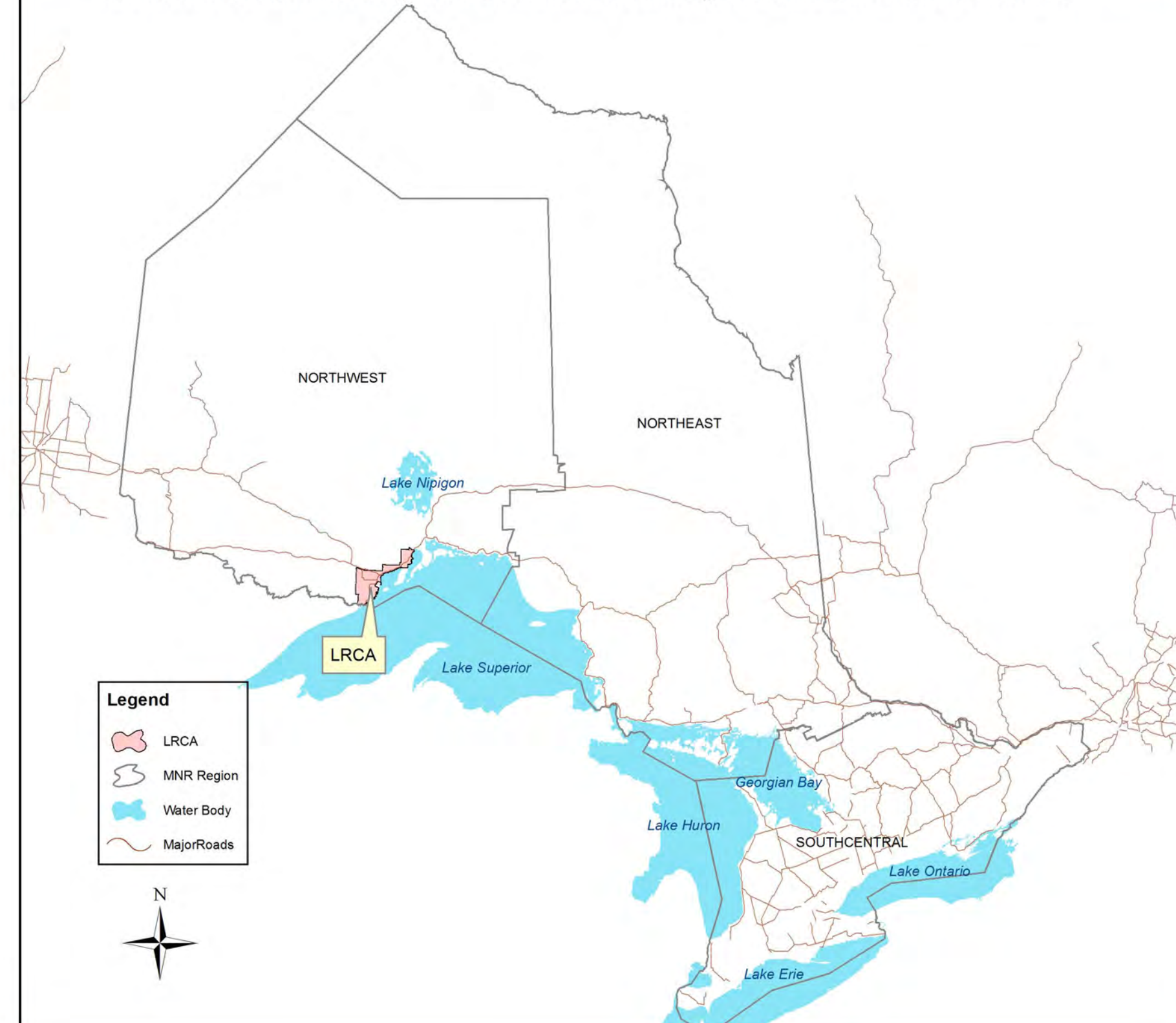
This map is for illustrative purposes only and is not reliable as a precise indicator of routes, location of features,
nor as a guide to navigation.

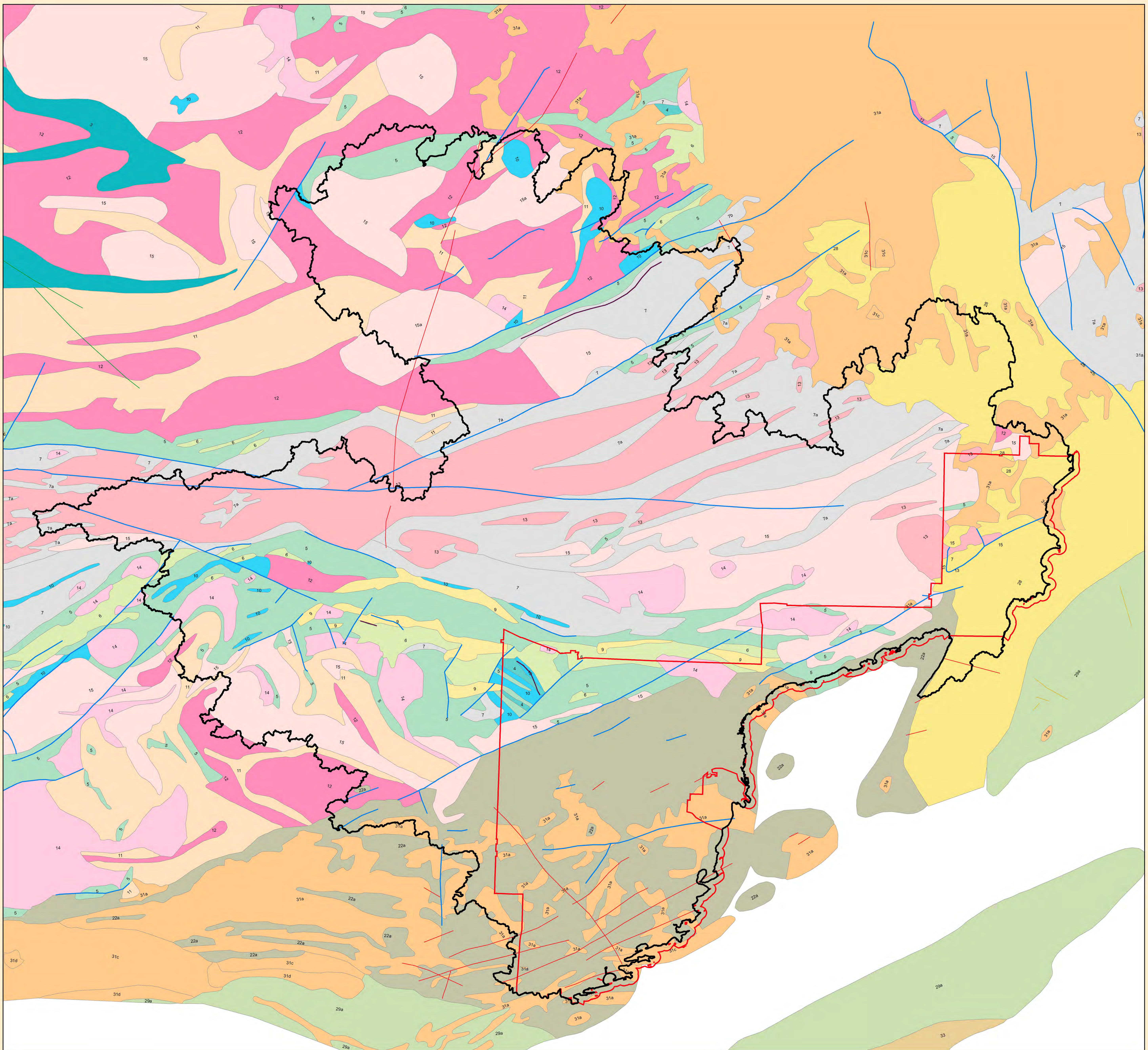


1:250,000



Location of Lakehead Region Conservation Authority within the Province of Ontario





Map #2 Watershed Characterization Lakehead Source Protection Area Bedrock Geology

This publication was produced by:
Lakehead Region Conservation Authority (LRCA)
130 Conservation Road
Thunder Bay, ON, P7B 6T8
807-344-5857

© 2008 Lakehead Region Conservation Authority. All Rights Reserved.

Base Data supplied under Licence by Members of the Ontario Geospatial Data Exchange.
Map Produced in Co-Operation with the Province of Ontario and Conservation Ontario

This map is for illustrative purposes only and is not reliable as a precise indicator of routes, location of features, nor as a guide to navigation.



Made possible through the support of the Ontario Government

Legend

Bedrock Formation

MESOPROTEROZOIC

33, Jacobsville Gp.; Oronto Gp.

31a, Mafic and related intrusive rocks (Keweenaw age)

31c, Mafic and related intrusive rocks (Keweenaw age)

31d, Mafic and related intrusive rocks (Keweenaw age)

29b, Osler Gp., Mamainse Point Fm., Michipicoten Island Fm.

29a, Osler Gp., Mamainse Point Fm., Michipicoten Island Fm.

28, Sibley Gp.

MESO to PAELOPROTEROZOIC

27a, Felsic intrusive rocks

PAELOPROTEROZOIC

22a, Sedimentary rocks

NEOARCHEAN Intrusive Rocks

16, Diorite - nepheline syenite suite

NEO-TO MESOARCHEAN Intrusive Rocks

15, Massive granodiorite to granite

15a, Massive granodiorite to granite

14, Diorite - monzonite - granodiorite suite

13, Muscovite - bearing granitic rocks

12, Foliated tonalite suite

11, Gneissic tonalite suite

10, Mafic and ultramafic rocks

NEOARCHEAN Supracrustal Rocks

9, Coarse clastic metasedimentary rocks

NEO-TO MESOARCHEAN Supracrustal Rocks

7, Metasedimentary rocks

7a, Metasedimentary rocks

7b, Metasedimentary rocks

6, Felsic to intermediate metavolcanic rocks

5, Mafic to intermediate metavolcanic rocks

4, Mafic to ultramafic metavolcanic rocks

MESOARCHEAN

3, Mafic metavolcanic and metasedimentary rocks

Surface Faults

Iron Formation

Dikes

31b-Pigeon River & Pukaskwa

30b-Sudbury

23c-North Channel

21b-Marathon

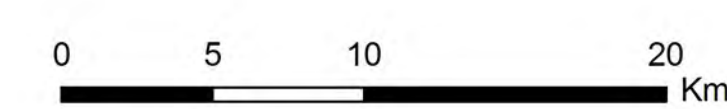
17a-Matachewan & Hearst

LRCA Source Protection Area

LRCA Jurisdiction Boundary



1:250,000



Prepared By: Roman Augustyn
Printing Date: February 21, 2008
Projection Information:
Name: NAD 1983 UTM Zone 16N
Projection: Transverse Mercator
Datum: North American 1983
Lakehead Region Conservation Authority



Map #3 Watershed Characterization Lakehead Source Protection Area Topography

This publication was produced by:
Lakehead Region Conservation Authority (LRCA)
130 Conservation Road
Thunder Bay, ON, P7B 6T8
807-344-5857

© 2008 Lakehead Region Conservation Authority. All Rights Reserved.

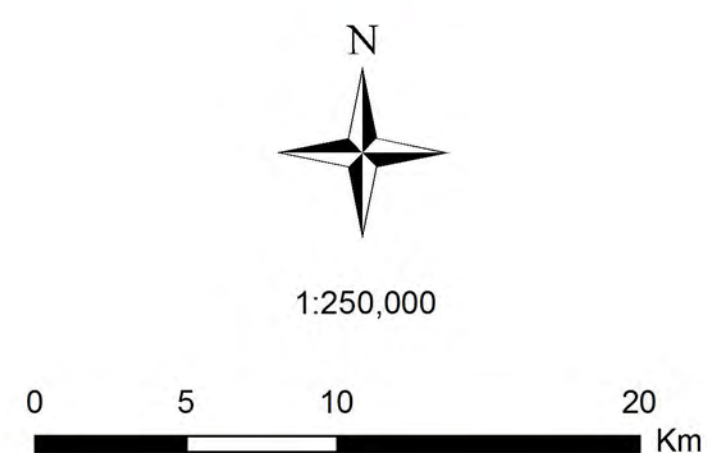
Base Data supplied under Licence by Members of the Ontario Geospatial Data Exchange.
Map Produced in Co-Operation with the Province of Ontario
and Conservation Ontario

This map is for illustrative purposes only and is not reliable as a precise indicator of routes, location of features,
nor as a guide to navigation.

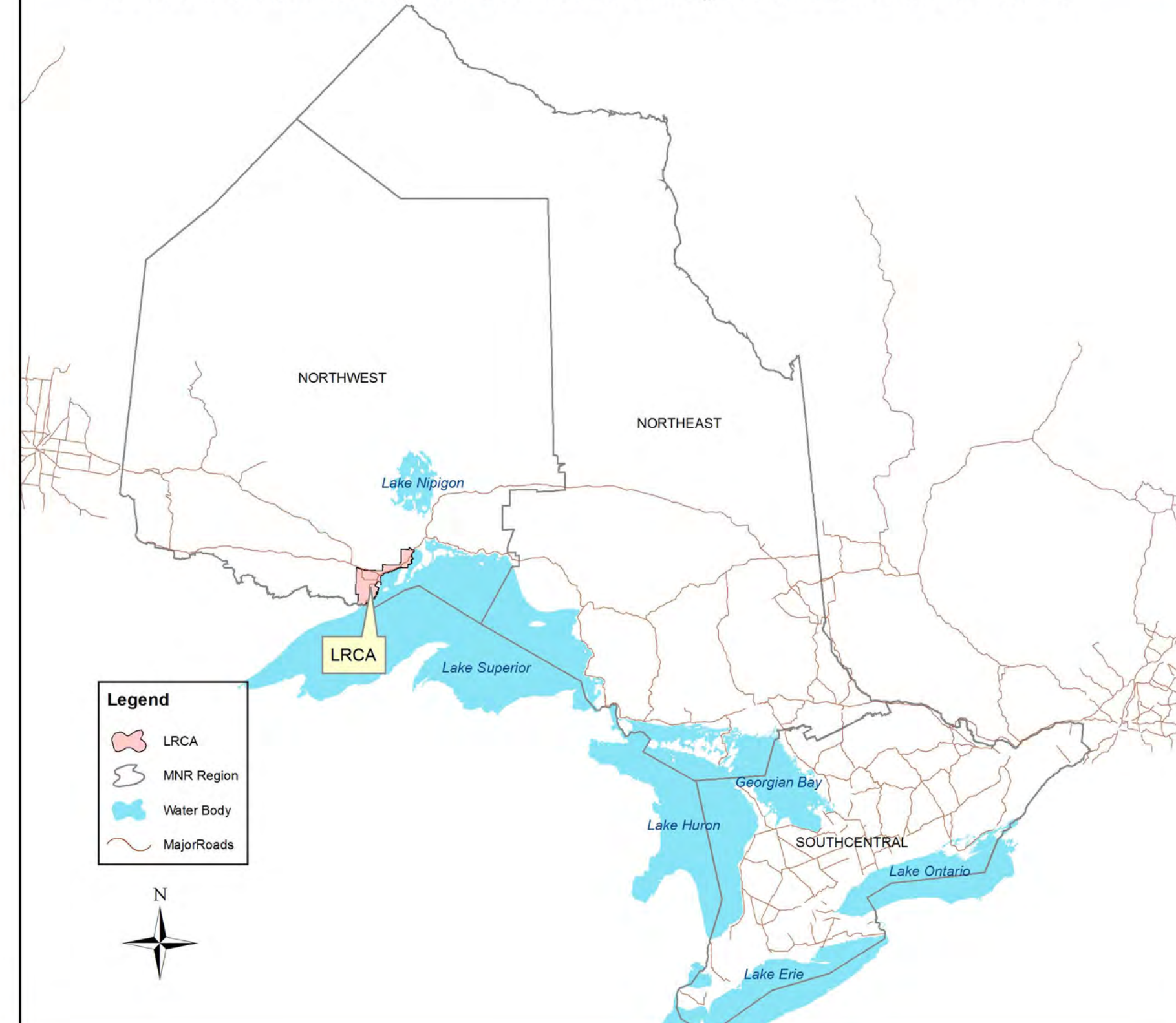


Made possible through the support
of the Ontario Government

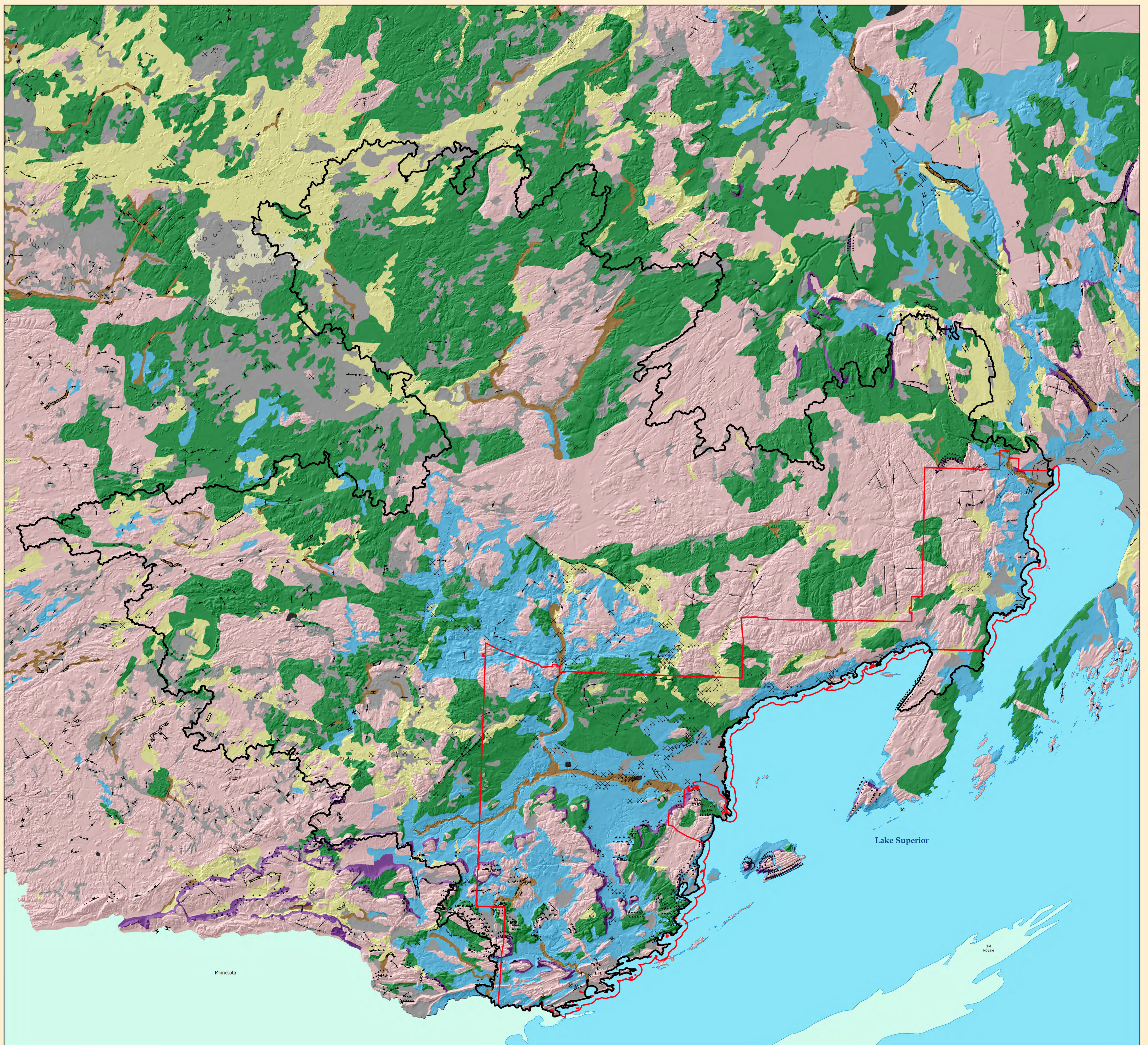
| Legend | |
|--------|---|
| | Lakehead Source Protection Area |
| | LRCA Jurisdiction Boundary |
| | Quaternary Watershed Boundary (i.e. 2AA-04 -- ID Number) |
| | Highway |
| | Communities |
| | Water |
| | Lake |
| | River |
| | Creek/Stream |
| | Surface Elevation (Metres Above Mean Sea Level) High : 700 Low : 65 |



Location of Lakehead Region Conservation Authority within the Province of Ontario



Prepared By: Roman Augustyn
Printing Date: February 21, 2008
Projection Information:
Name: NAD 1983 UTM Zone 16N
Projection: Transverse Mercator
Datum: North American 1983
Lakehead Region Conservation Authority



Map #3A Watershed Characterization Lakehead Source Protection Area Physiography

This publication was produced by:
 Lakehead Region Conservation Authority (LRCA)
 130 Conservation Road
 Thunder Bay, ON, P7B 6T8
 807-344-6857

© 2008 Lakehead Region Conservation Authority. All Rights Reserved.

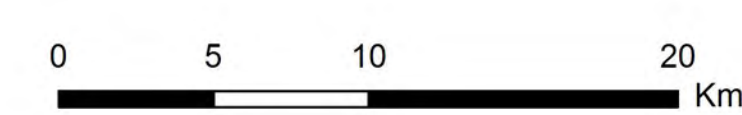
Base Data supplied under Licence by Members of the Ontario Geospatial Data Exchange
 Map Produced in Co-operation with the Province of Ontario
 and Conservation Ontario

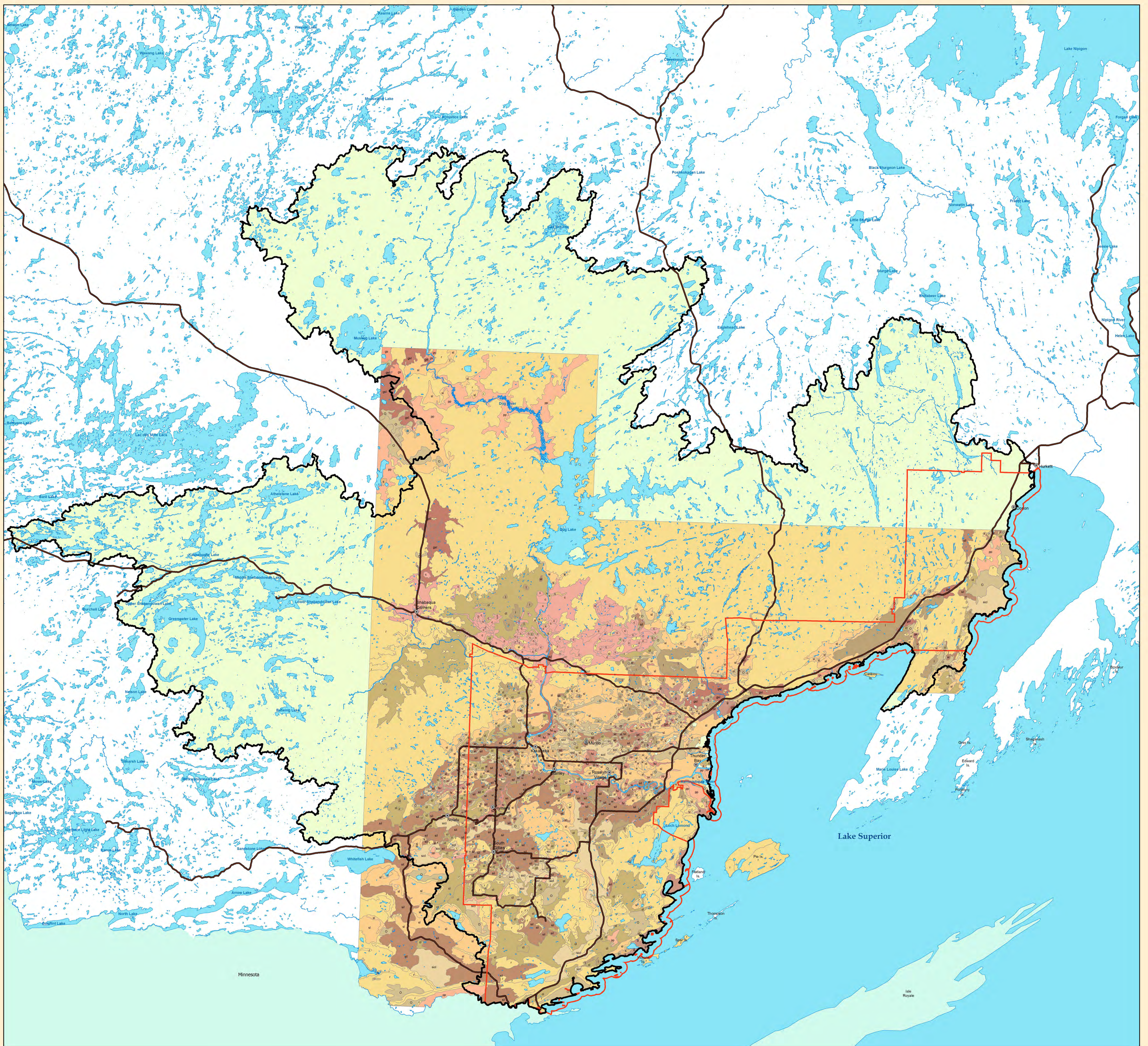
This map is for illustrative purposes only and is not reliable as a precise indicator of routes, location of features,
 nor as a guide to navigation.

| Legend | | | |
|--------------------------|----------------------------|--------------------------------|---------------------------------|
| Surficial Geology | Glaciolacustrine plain | Surficial Line Features | Surficial Point Features |
| LANDFORM | Alluvial | DESCRIPTION | DESCRIPTION |
| No Data | Slope failure | Abandoned River Channel | LOCAL DUNE AREA |
| End moraine | Talus pile | Abandoned Shoreline | QUARRY/MINE WORKINGS |
| Ground moraine | Slopewash and debris creep | Escarpment | SMALL LANDSLIDE SCAR |
| Hummocky moraine | Sand dunes | Esker | SAND/GRAVEL PIT |
| Ice contact delta | Organics | Major End Moraine | TALUS |
| Esker | Bedrock plateau | Drumlin | LRCA Source Protection Area |
| Kame | Bedrock knob | Other Linear Ice-Flow Features | LRCA Jurisdiction Boundary |
| Outwash plain | Bedrock plain | Steep-Walled Valleys | |
| Raised beach | Bedrock ridge | | |
| Glaciolacustrine delta | Bedrock below drift veneer | | |



1:244,275





Map #4 Watershed Characterization Lakehead Source Protection Area Soils Composition (OMAFRA)

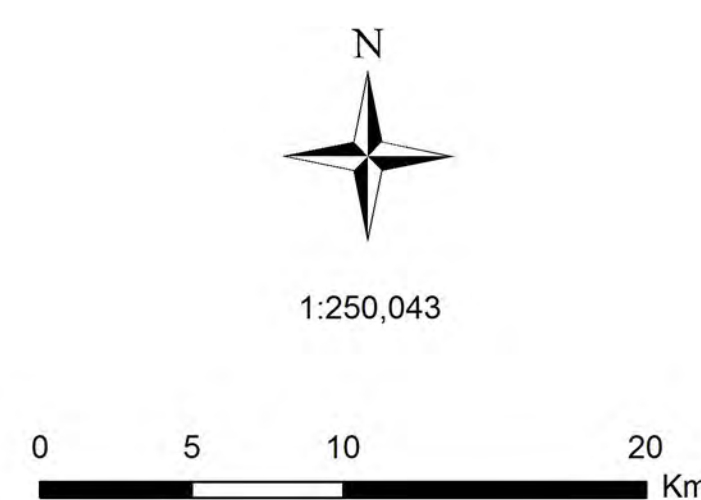
This publication was produced by:
Lakehead Region Conservation Authority (LRCA)
130 Conservation Road
Thunder Bay, ON, P7B 6T8
807-344-5857

© 2008 Lakehead Region Conservation Authority. All Rights Reserved.

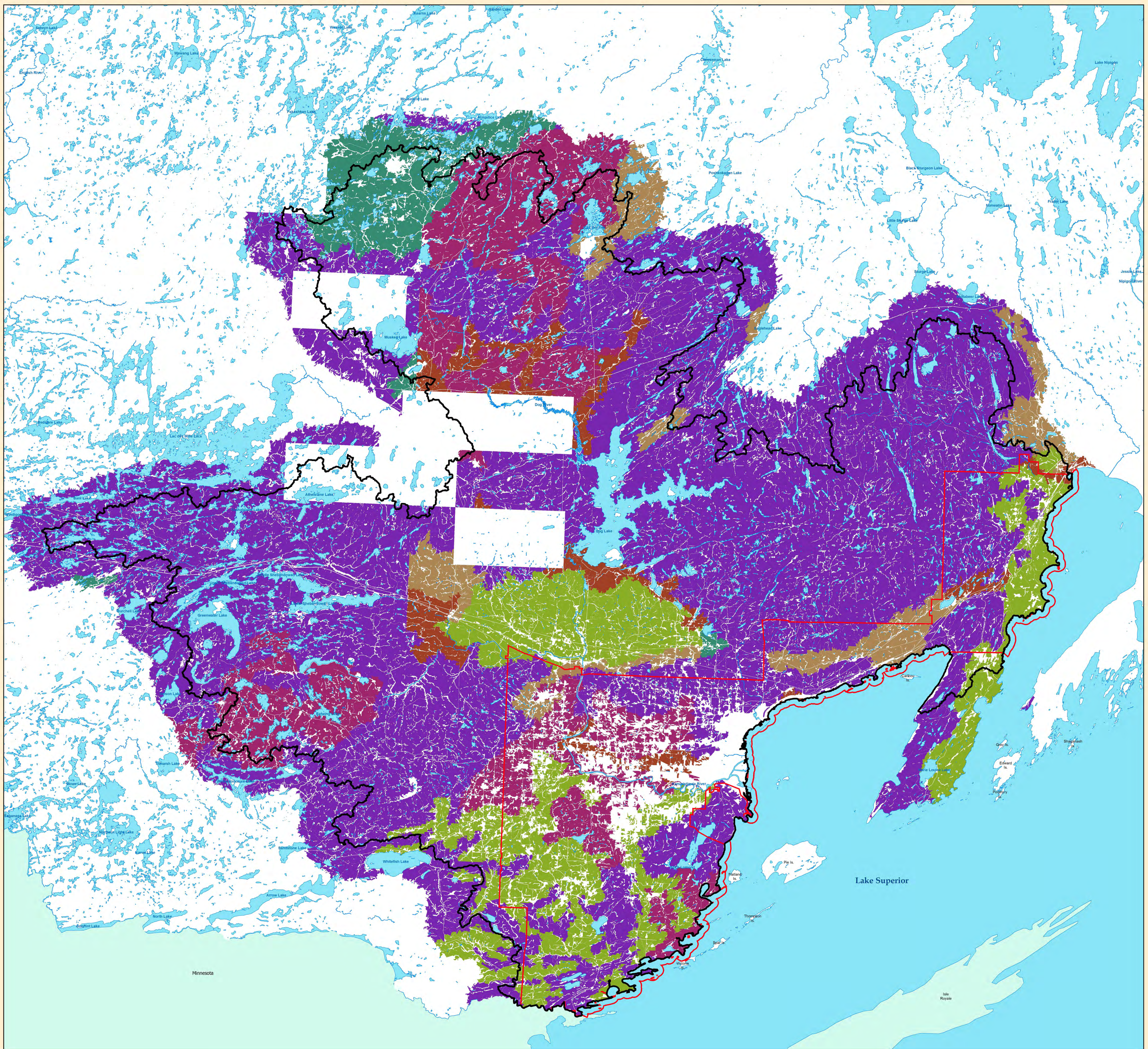
Base Data supplied under Licence by Members of the Ontario Geospatial Data Exchange.
Map Produced in Co-Operation with the Province of Ontario
and Conservation Ontario

This map is for illustrative purposes only and is not reliable as a precise indicator of routes, location of features,
nor as a guide to navigation.

| Legend | |
|-----------------------------------|-----------------------------|
| Soils (OMAFRA) | LRCA Source Protection Area |
| Soil Type | LRCA Jurisdiction Boundary |
| O, Organic | Main Roads |
| c, Clay | Waterbody |
| cl, Clay Loam | Data Gap |
| fsl, Fine Sandy Loam | |
| g, Gravel | |
| gs, Gravelly Sand | |
| gsi, Gravelly Sandy Loam | |
| l, Medium to Moderately Fine Loam | |
| ls, Loamy Sand | |
| pp, Peaty Phase | |
| r, Rock | |
| s, Coarse Sand and Loamy Sand | |
| scl, Silty Clay Loam | |
| sil, Silt Loam | |
| sl, Moderately Coarse Sandy Loam | |
| vsil, Very Fine Sandy Loam | |



Prepared By: Roman Augustyn
Printing Date: February 22, 2008
Projection Information:
Name: NAD 1983 UTM Zone 16N
Datum: North American 1983
Lakehead Region Conservation Authority



**Map #4A Watershed Characterization
Lakehead Source Protection Area
Forest Soils Derived from Forest Resource Inventory**

This map was derived from Forest Resource Inventory and Forest Ecosite Classification maps to depict the soils from a perspective that supports ecosystem plant life. These soils represent the upper layers of the soil strata which provide nutrients to plant life.

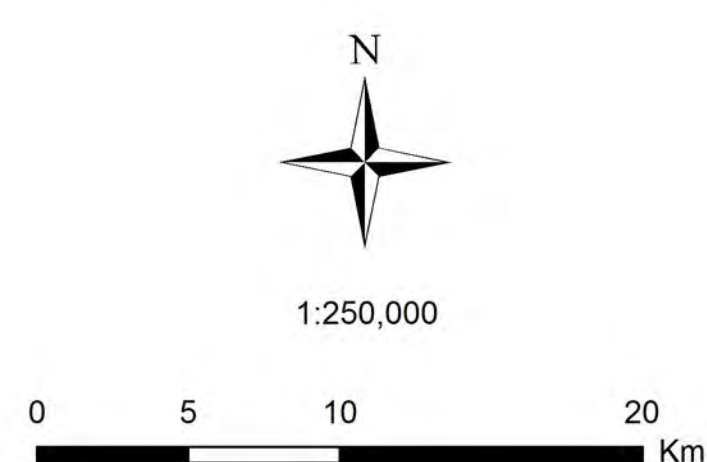
This publication was produced by:
Lakehead Region Conservation Authority (LRCA)
130 Conservation Road
Thunder Bay, ON, P7B 6T8
807-344-5857

© 2008 Lakehead Region Conservation Authority. All Rights Reserved.

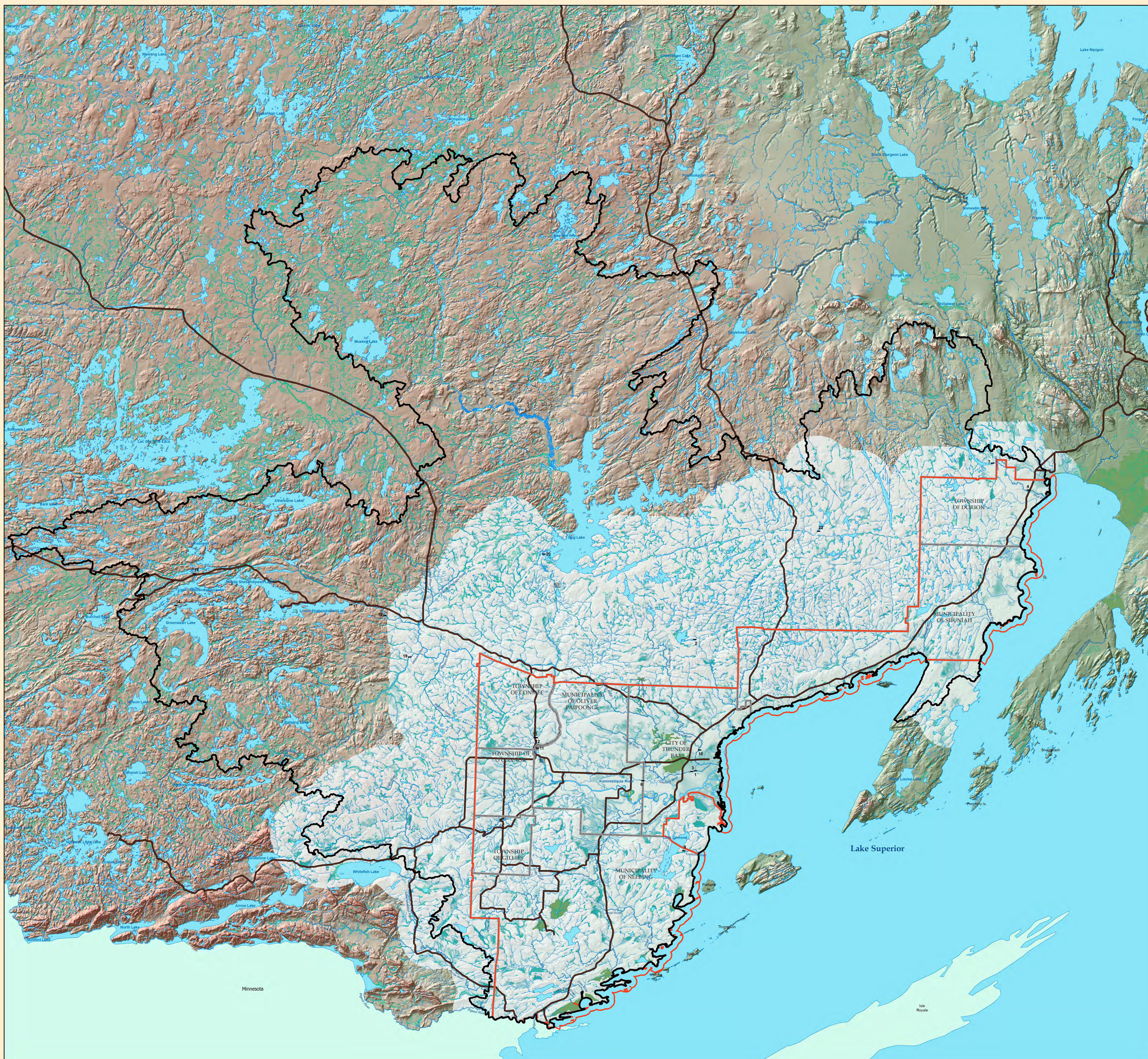
Base Data supplied under Licence by Members of the Ontario Geospatial Data Exchange.
Map Produced in Co-Operation with the Province of Ontario and Conservation Ontario.

This map is for illustrative purposes only and is not reliable as a precise indicator of routes, location of features, nor as a guide to navigation.

| Legend | |
|--------------------|-----------------------------|
| FRI Soil Types | LRCA Source Protection Area |
| Clay Loam | LRCA Jurisdiction Boundary |
| Coarse Medium Sand | Waterbody |
| Coarse Sand | |
| Fine Sand | |
| Loam | |
| Medium Sand | |



Prepared By: Roman Augustyn
Printing Date: February 25, 2008
Projection Information:
Name: NAD 1983 UTM Zone 18N
Projection: Transverse Mercator
Datum: North American 1983
Lakehead Region Conservation Authority



Map #5 Watershed Characterization Lakehead Source Protection Area Significant Hydrologic Features

Potential Recharge/Discharge Data based on LRCA Groundwater Study

This publication was produced by:
Lakehead Region Conservation Authority (LRCA)
130 Conservation Road
Thunder Bay, ON, P7B 6T8
807-344-5857

© 2008 Lakehead Region Conservation Authority. All Rights Reserved.

Base Data supplied under Licence by Members of the Ontario Geospatial Data Exchange.
Map Produced in Co-Operation with the Province of Ontario
and Conservation Ontario

This map is for illustrative purposes only and is not reliable as a precise indicator of routes, location of features,
nor as a guide to navigation.

Legend

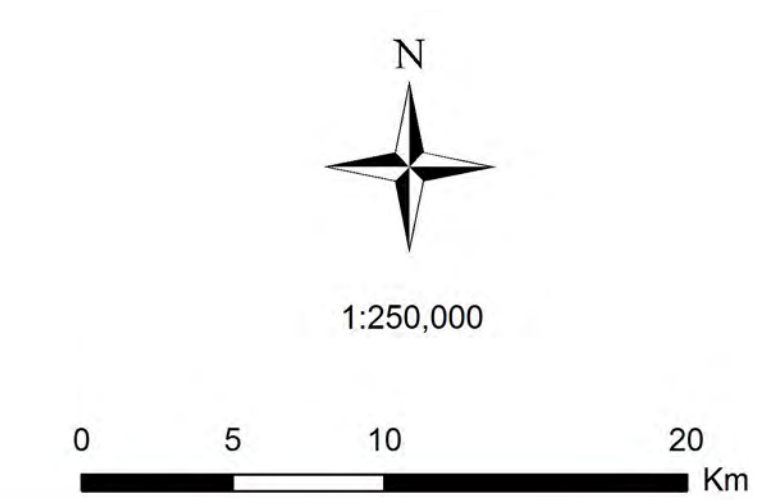
- Lakehead Source Protection Area
- LRCA Jurisdiction Boundary
- Municipal Boundary
- Evaluated Wetland
- Low to No Discharge Potential
- Increasing Discharge Potential
- Dam
- Electric Power Station
- Water
- Lake
- Wetland
- Permanent Watercourse
- River
- Creek/Stream
- Highway

Dams in Lakehead Source Protection Area

| No | Name | Owner | Purpose |
|----|-------------------------------------|--------------------------|------------------------|
| 1 | Neelburg/Michyn Diversion Structure | LRCA | Flood Control |
| 2 | Hazelwood Lake Dam | LRCA | Recreation |
| 3 | Neelburg River Weir | LRCA | Sea Lamprey Barrier |
| 4 | Wolf River Weir | EFDO | Sea Lamprey Barrier |
| 6 | Pemock Creek Dam | MNR | Irrigation |
| 7 | Wolf River Dam | MNR | Fish Hatchery |
| 8 | Boulevard Lake Dam | City of Thunder Bay | Recreation |
| 9 | Cap River Dam | City of Thunder Bay | Municipal Water Supply |
| 10 | Lakehead University Fishway | City of Thunder Bay | Artificial Lake |
| 11 | Kakabeka Falls Dam | Lakehead University | Control Dam |
| 12 | Kakabeka Falls Game Farm | Ontario Power Generation | Habitat |
| 13 | Kakabeka Falls Game Farm | Private | Habitat |
| 14 | Greenwater Lake Dam | Ontario Power Generation | Control Dam |
| 16 | Kashabawa Lake Dam | Ontario Power Generation | Control Dam |
| 17 | Shebandowan Lake Dam | Ontario Power Generation | Control Dam |
| 18 | Maitland Dam | MNR | Control Dam |
| 19 | Matawin River Dam | MNR | Control Dam |
| 20 | Dog Lake Dam | Ontario Power Generation | Control Dam |
| 22 | Ray Lake Dam | MNR | Control Dam |



Made possible through the support of the Ontario Government



Prepared By: Roman Augustyn
Printing Date: February 27, 2008
Projection Information:
Name: NAD 1983 UTM Zone 18N
Projection: Transverse Mercator
Datum: North American 1983
Lakehead Region Conservation Authority



Map #6 Watershed Characterization Lakehead Source Protection Area Wetlands

This publication was produced by:
Lakehead Region Conservation Authority (LRCA)
130 Conservation Road
Thunder Bay, ON, P7B 6T8
807-544-5857

© 2008 Lakehead Region Conservation Authority. All Rights Reserved.

Base Data supplied under Licence by Members of the Ontario Geospatial Data Exchange.
Map Produced in Co-Operation with the Province of Ontario
and Conservation Ontario

This map is for illustrative purposes only and is not reliable as a precise indicator of routes, location of features,
nor as a guide to navigation.

Legend

- Lakehead Source Protection Area
- LRCA Jurisdiction Boundary
- Provincially Significant Wetland
- Evaluated Wetland
- FRI Wetlands
- Communities
- Roads**
- Highway
- Road
- Water**
- Waterbody
- Wetland
- Permanent Watercourse**
- River
- Creek/Stream



Prepared By: Roman Augustyn
Printing Date: February 28, 2008
Projection Information:
Name: NAD 1983 UTM Zone 18N
Projection: Transverse Mercator
Datum: North American 1983
Lakehead Region Conservation Authority



**Map #7 Watershed Characterization
Lakehead Source Protection Area
Wooded Areas**

This publication was produced by:
Lakehead Region Conservation Authority (LRCA)
130 Conservation Road
Thunder Bay, ON, P7B 6T8
807-544-6857

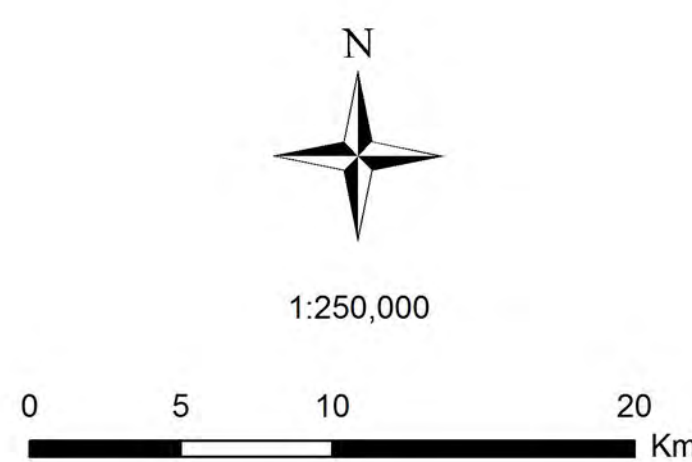
© 2008 Lakehead Region Conservation Authority. All Rights Reserved.

Base Data supplied under Licence by Members of the Ontario Geospatial Data Exchange.
Map Produced in Co-operation with the Province of Ontario
and Conservation Ontario

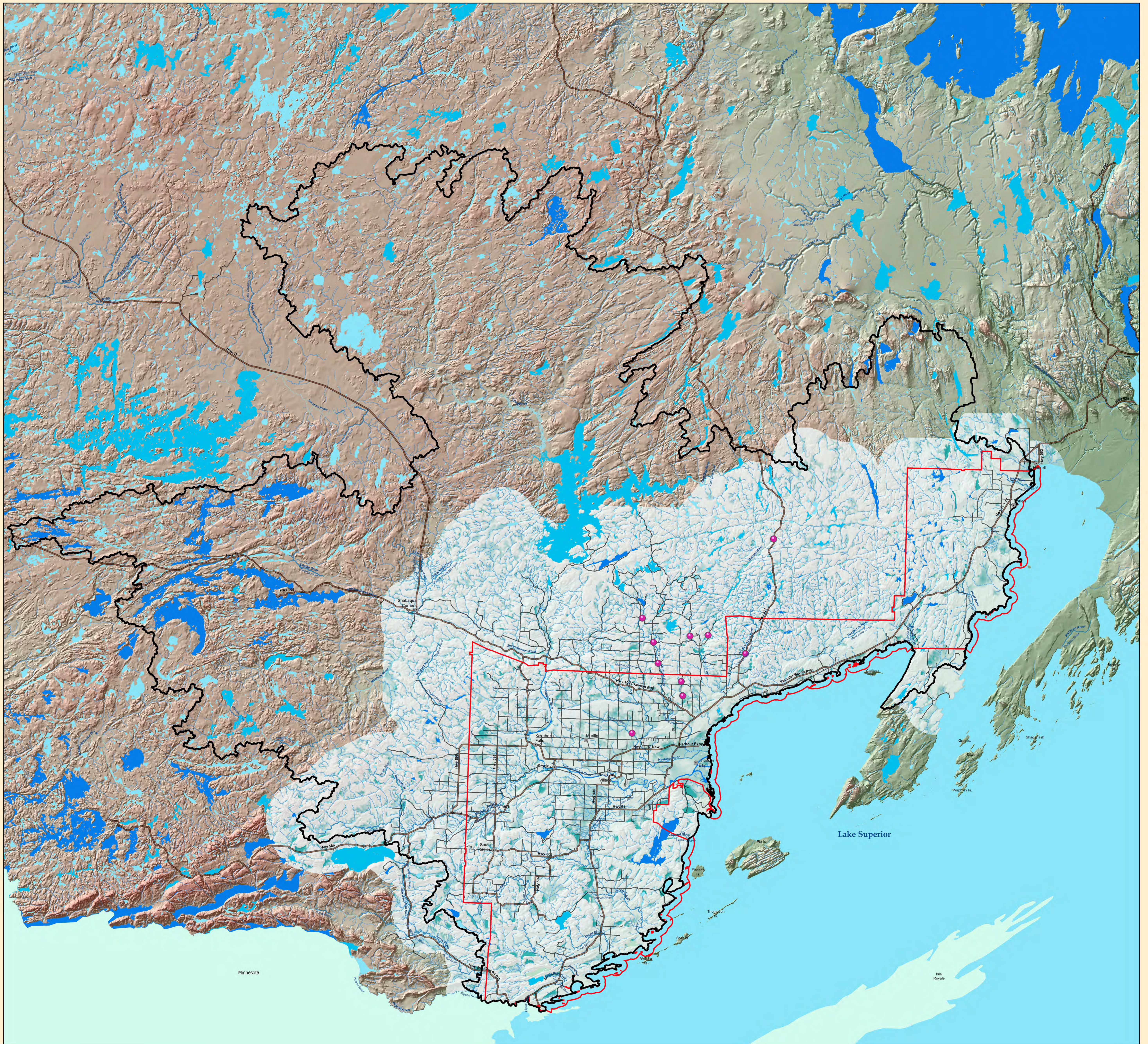
This map is for illustrative purposes only and is not reliable as a precise indicator of routes, location of features,
nor as a guide to navigation.



| Legend | |
|-----------------------|--|
| | Lakehead Source Protection Area |
| | LRCA Jurisdiction Boundary |
| | ANSI (Area of Natural and Scientific Interest) |
| | Conservation Reserves |
| | Environmentally Sensitive Area |
| | Provincial Parks |
| | Wooded Area |
| | Communities |
| Roads | |
| | Highway |
| | Road |
| Permanent Watercourse | |
| | River |
| | Creek/Stream |
| Water | |
| | Waterbody |
| | Wetland |



Prepared By: Roman Augustyn
Printing Date: February 28, 2008
Projection Information:
Name: NAD 1983 UTM Zone 18N
Projection: Transverse Mercator
Datum: North American 1983
Lakehead Region Conservation Authority



Map #8 Watershed Characterization Lakehead Source Protection Area Aquatic Ecology

Note:
Benthos Reference Condition Sites location were taken from the "Benthic Community Reference Condition Sites in Thunder Bay, 2004" Report. Location of the sites are approximate.

Potential Recharge/Discharge data was taken from LRCA Ground Water Study Report.

This publication was produced by:

Lakehead Region Conservation Authority (LRCA)
130 Conservation Road
Thunder Bay, ON, P7B 6T8
807-344-5857

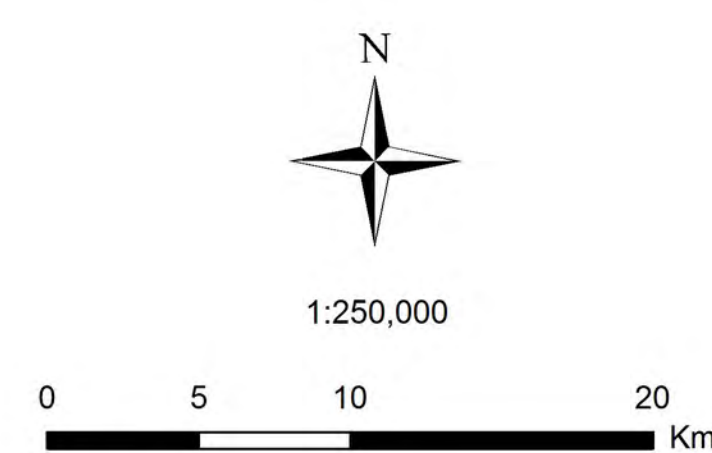
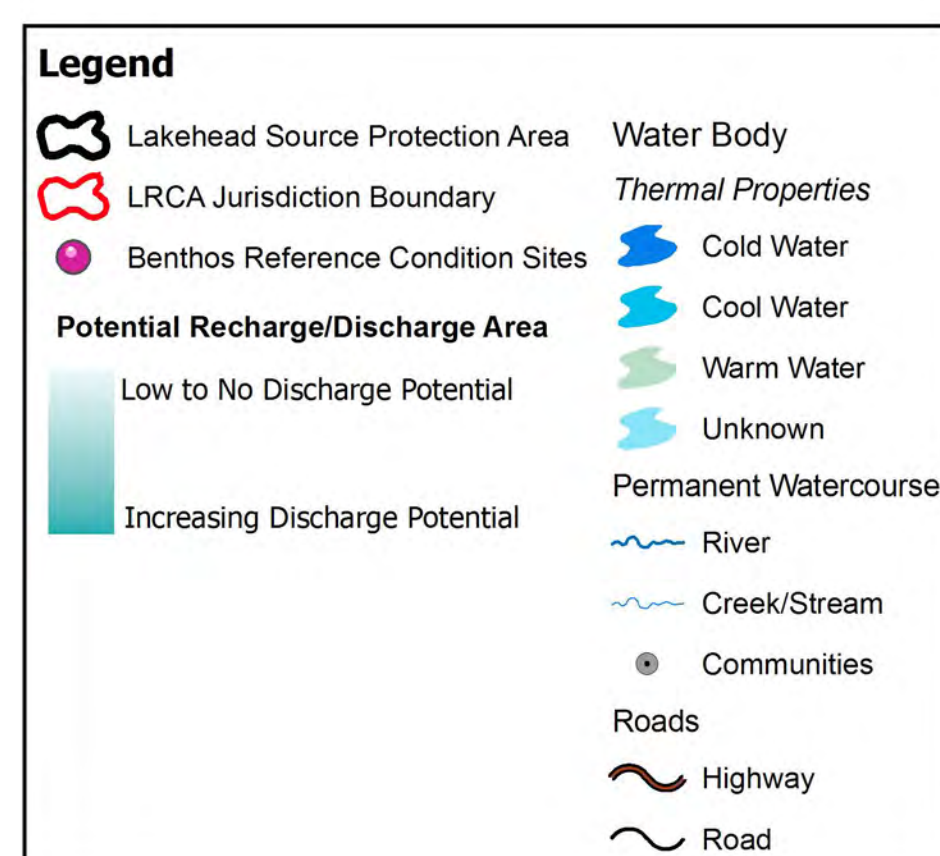
© 2008 Lakehead Region Conservation Authority. All Rights Reserved.

Base Data supplied under Licence by Members of the Ontario Geospatial Data Exchange.
Map Produced in Co-Operation with the Province of Ontario and Conservation Ontario

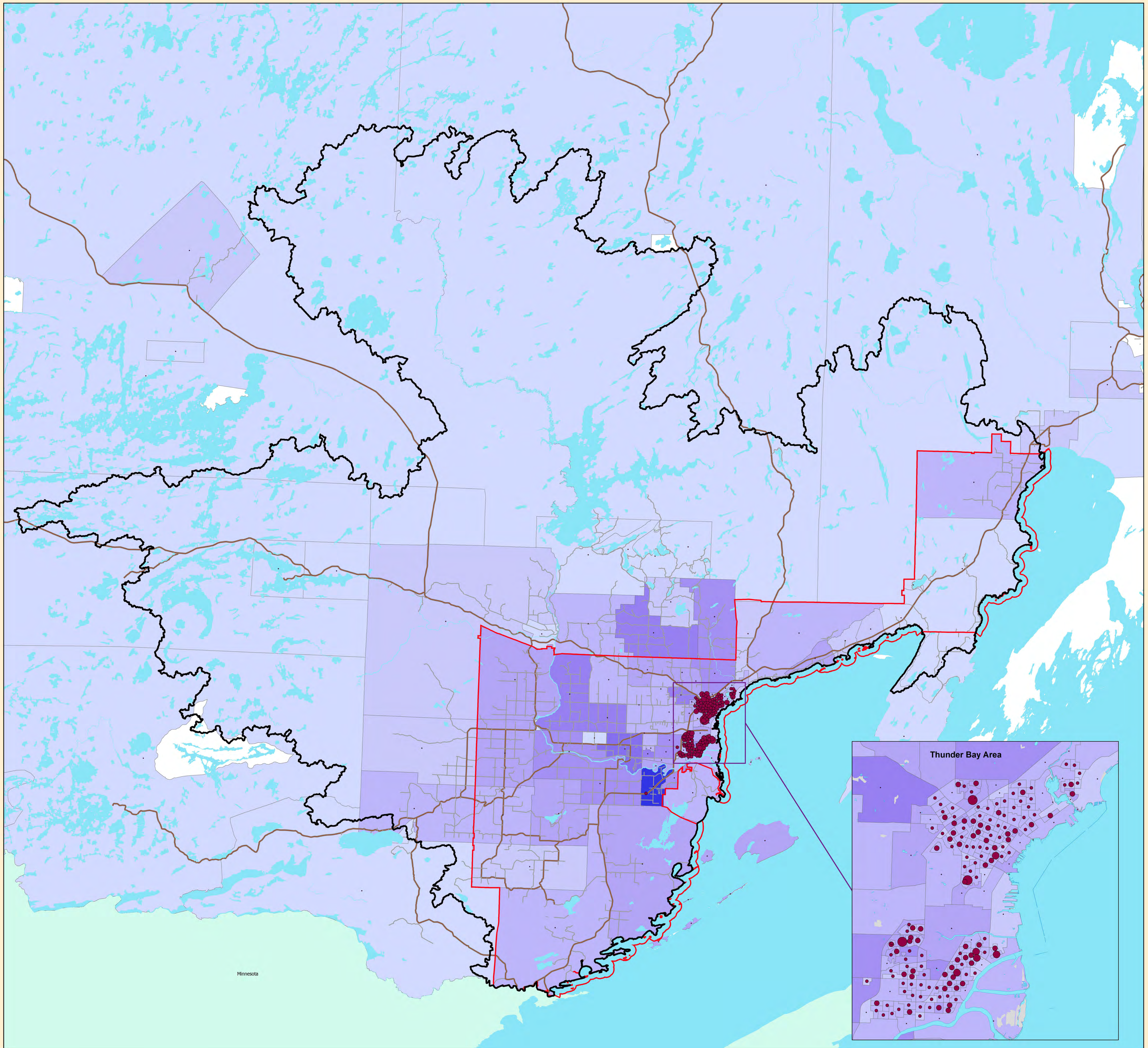
This map is for illustrative purposes only and is not reliable as a precise indicator of routes, location of features, nor as a guide to navigation.



Made possible through the support of the Ontario Government



Prepared By: Roman Augustyn
Printing Date: February 28, 2008
Projection Information:
Name: NAD 1983 UTM Zone 16N
Projection: Transverse Mercator
Datum: North American 1983
Lakehead Region Conservation Authority



Map # 9 Watershed Characterization
Lakehead Source Protection Area
Population Distribution and Densities
by Dissemination Areas

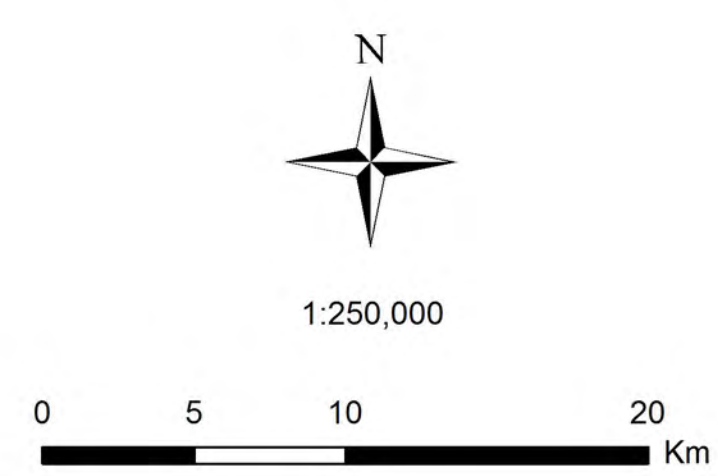
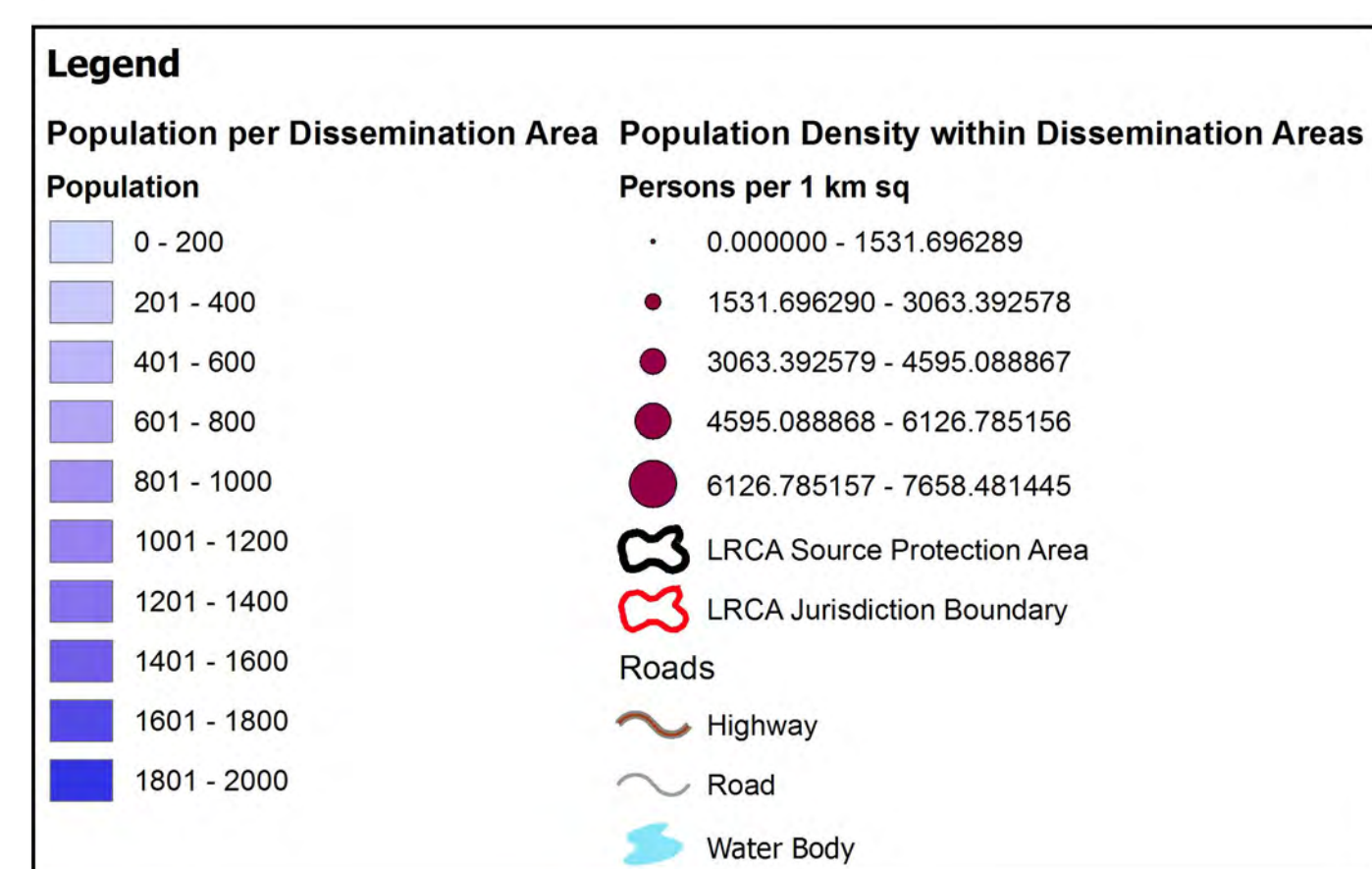
Note: Population and Density data derived from Statistics Canada 2001 Census

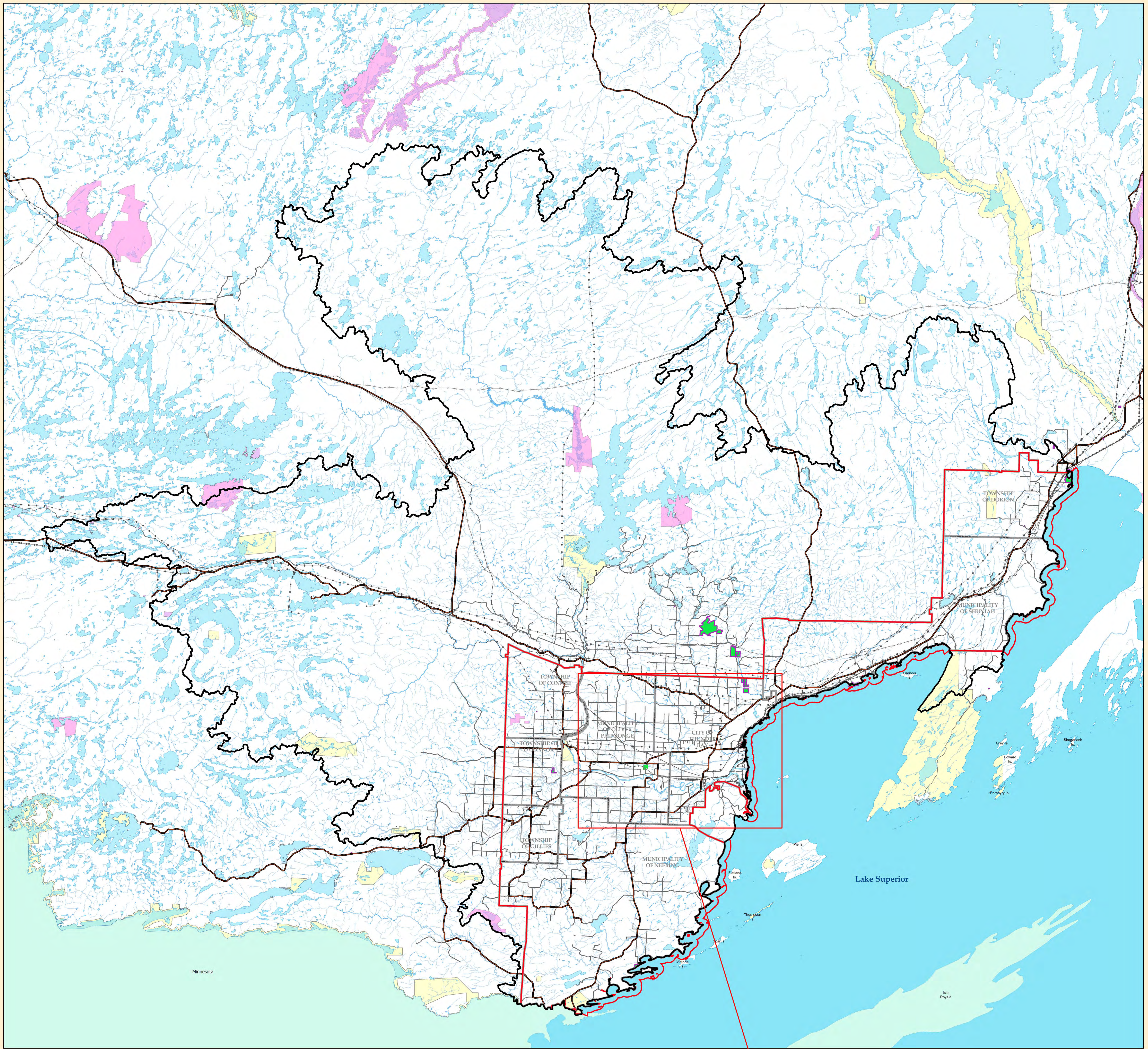
This publication was produced by:
 Lakehead Region Conservation Authority (LRCA)
 130 Conservation Road
 Thunder Bay, ON, P7B 6T8
 807-344-5857

© 2008 Lakehead Region Conservation Authority. All Rights Reserved.

Base Data supplied under Licence by Members of the Ontario Geospatial Data Exchange.
 Map Produced in Co-Operation with the Province of Ontario
 and Conservation Ontario

This map is for illustrative purposes only and is not reliable as a precise indicator of routes, location of features,
 nor as a guide to navigation.





Map # 10 Watershed Characterization Lakehead Source Protection Area Existing and Future Land Uses

This publication was produced by:
 Lakehead Region Conservation Authority (LRCA)
 130 Conservation Road
 Thunder Bay, ON, P7B 6T8
 807-344-5857

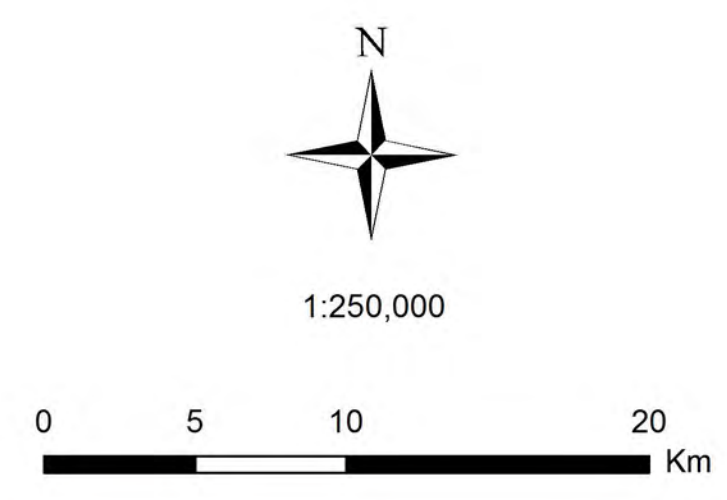
© 2008 Lakehead Region Conservation Authority. All Rights Reserved.

Base Data supplied under Licence by Members of the Ontario Geospatial Data Exchange.
 Map Produced in Co-Operation with the Province of Ontario
 and Conservation Ontario

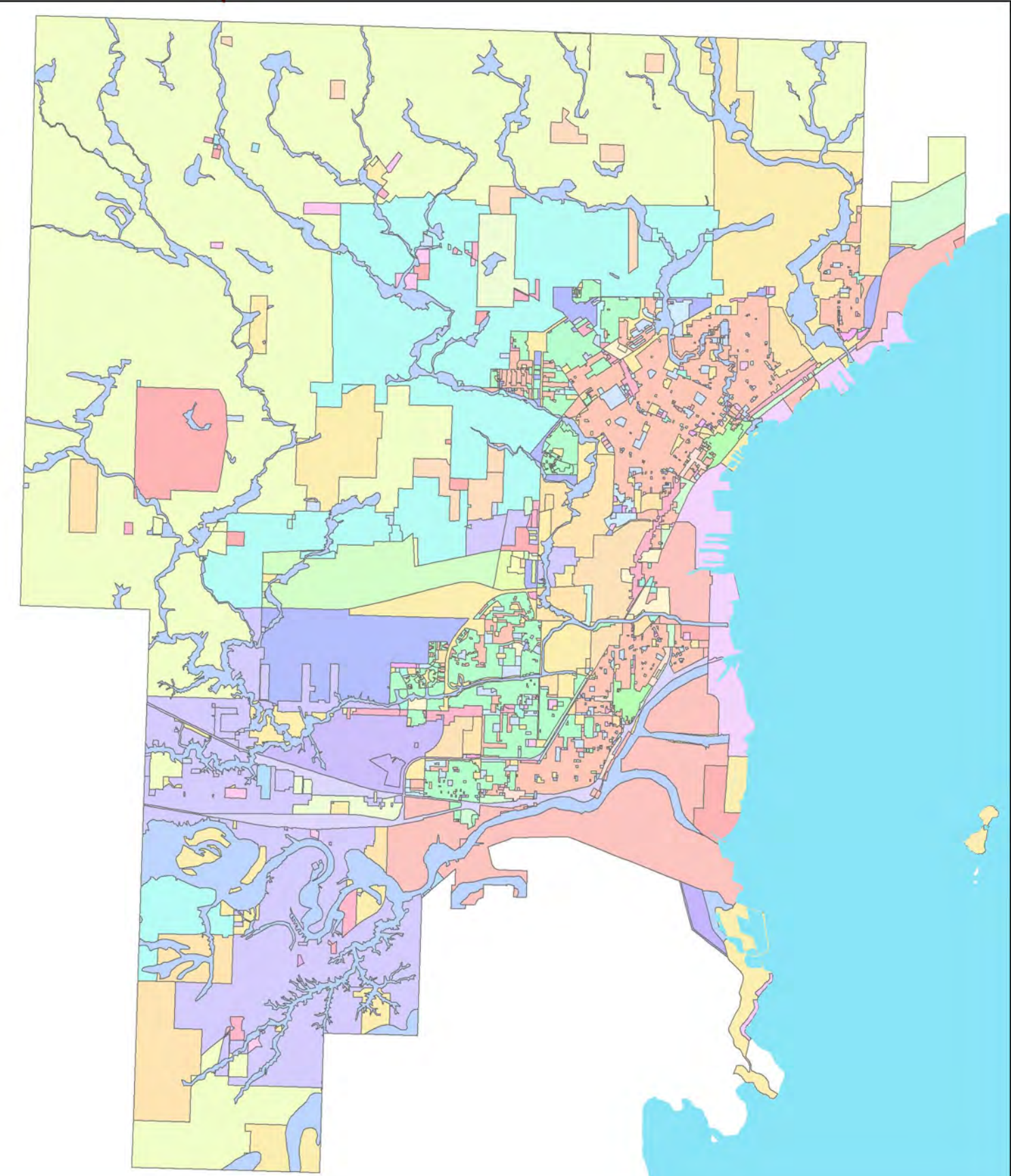
This map is for illustrative purposes only and is not reliable as a precise indicator of routes, location of features,
 nor as a guide to navigation.



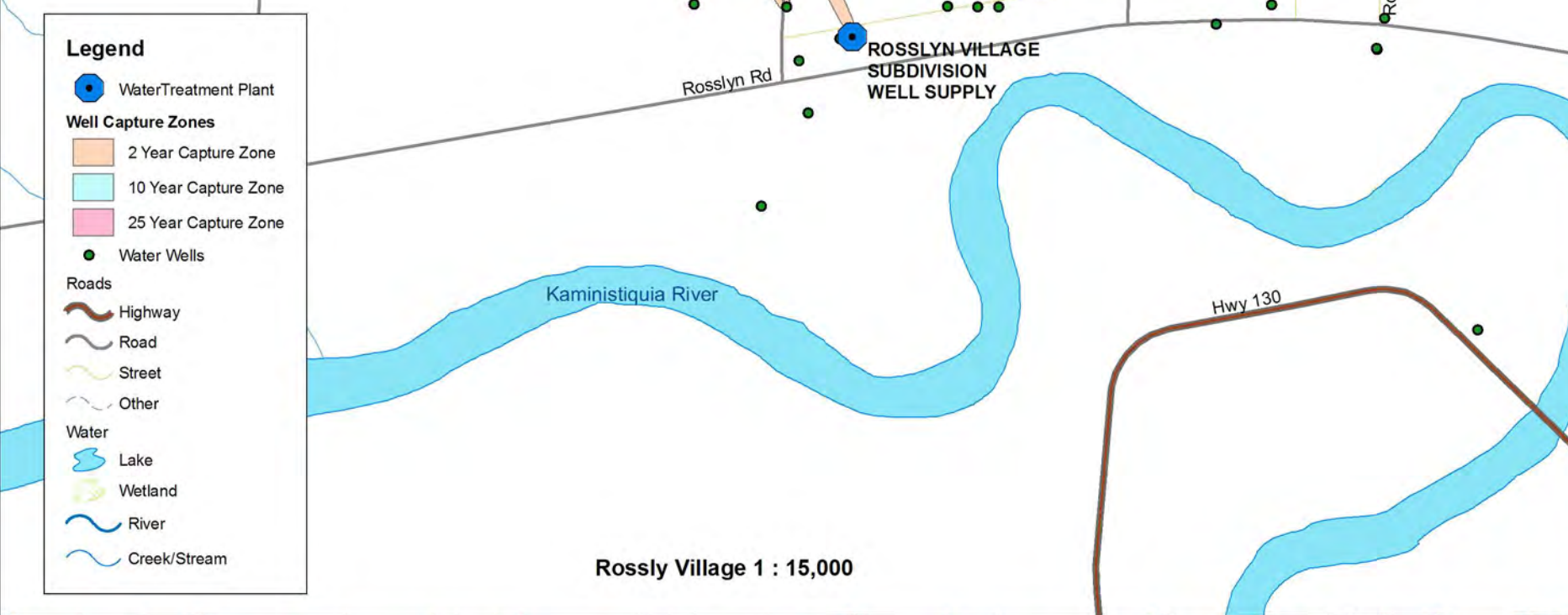
| Legend | |
|--------|---------------------------------|
| | LRCA Jurisdiction Boundary |
| | Lakehead Source Protection Area |
| | Municipal Boundary |
| | LRCA Property |
| | Conservation Area |
| | Conservation Reserve |
| | Abandoned Mines |
| | Cottage Residential Area |
| | Cottage Residential Site |
| | Waste Disposal Site |
| | Provincial Park |
| | Roads |
| | Highway |
| | Road |
| | Waterbody |
| | Permanent Watercourse |
| | River |
| | Creek/Stream |



| Legend | |
|--------|--|
| | Airport Zone |
| | Central Business District Zone |
| | Commercial Shopping Centre Zone |
| | Community Institutional Zone |
| | Outrage Residential Zone |
| | Future Development Zone |
| | Future Industrial Zone |
| | General Business Park Zone |
| | General Commercial Zone 1 |
| | General Commercial Zone 2 |
| | Neighbourhood Industrial Zone |
| | Hazardous Land Zone |
| | Heavy Industrial Zone |
| | Highway Commercial Zone |
| | Neighbourhood Institutional Zone |
| | Light Industrial Park Zone |
| | Light Industrial Zone |
| | Major Institutional Zone |
| | Neighbourhood Commercial Zone 1 |
| | Neighbourhood Commercial Zone 2 |
| | Neighbourhood Institutional Zone |
| | Open Space |
| | Prestige Business Park Zone |
| | Railway Zone |
| | Residential Estate Zone |
| | Residential Future Zone 1 |
| | Residential Future Zone 2 |
| | Residential Home Home Park Zone |
| | Residential Multiple Medium Density Zone A |
| | Residential Multiple Low Density Zone |
| | Residential Multiple Medium Density Zone B |
| | Residential One and Two Unit Zone |
| | Residential One Unit Zone |
| | Residential One Unit Zone A |
| | Residential Suburban Zone |
| | Rural Area Zone |
| | Rural Commercial Zone 1 |
| | Rural Commercial Zone 2 |
| | Site Specific Zone |
| | Special Purpose Commercial Zone |
| | Suburban Commercial Zone |
| | Suburban Industrial Zone |
| | Utilities and Services Zone |



Prepared By: Roman Augustyn
 Printing Date: January 18, 2007
 Projection Information:
 Name: NAD 1983 UTM Zone 18N
 Datum: North American 1983
 File: Map10 - Existing and Future Land Uses.mxd
 Lakehead Region Conservation Authority



**Map # 11 Watershed Characterization
Lakehead Source Protection Area
Municipal Water Wells, Water Treatment Plants
and Wastewater Treatment Facilities**

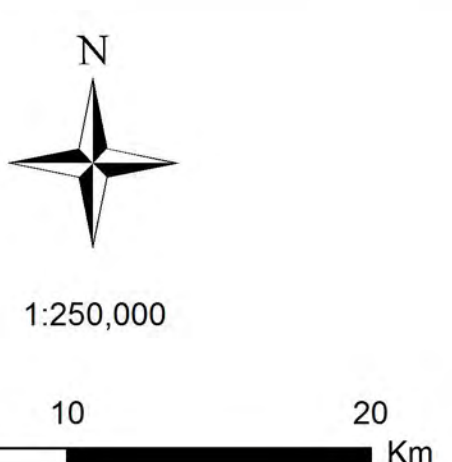
This publication was produced by:
Lakehead Region Conservation Authority (LRCA)
130 Conservation Road
Thunder Bay, ON, P7B 6T8
807-344-5857
© 2008 Lakehead Region Conservation Authority. All Rights Reserved.

Base Data supplied under Licence by Members of the Ontario Geospatial Data Exchange.
Map Produced in Co-Operation with the Province of Ontario and Conservation Ontario

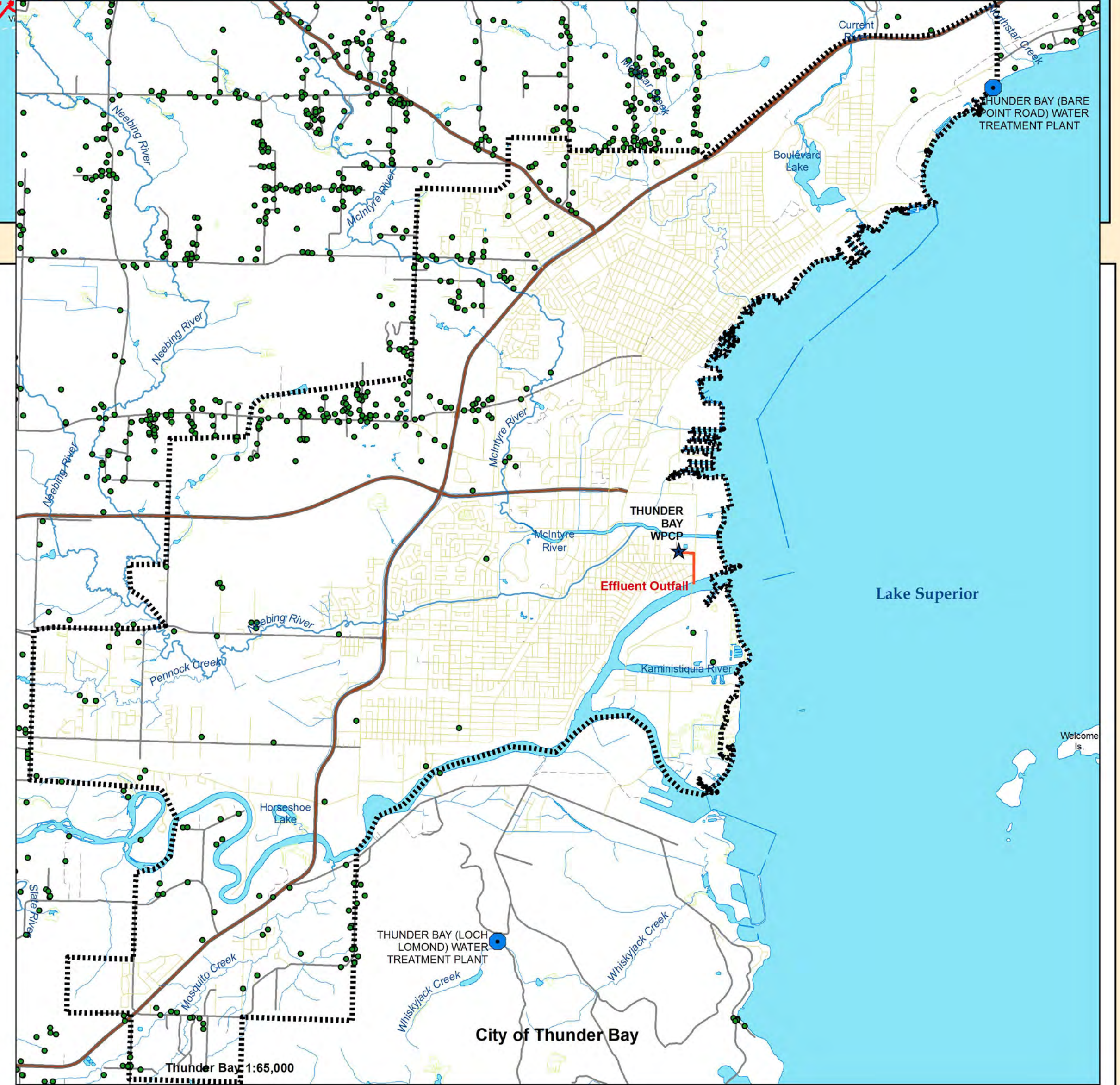
This map is for illustrative purposes only and is not reliable as a precise indicator of routes, location of features, nor as a guide to navigation.



- Legend**
- Lakehead Source Protection Area
 - LRCA Jurisdiction Boundary
 - Municipal Boundary
 - Sanitary Collection Area
 - Water Treatment Plant
 - Sewage Treatment Plant
 - Water Wells
 - Roads**
 - Highway
 - Road
 - Water**
 - Lake
 - River
 - Creek/Stream



Prepared By: Roman Augustyn
Printing Date: March 3, 2008
Projection Information:
Name: NAD 1983 UTM Zone 18N
Projection: Transverse Mercator
Datum: North American 1983
Lakehead Region Conservation Authority





Map #15 Watershed Characterization Lakehead Source Protection Area Water Takings and Water Use

This publication was produced by:
Lakehead Region Conservation Authority (LRCA)
130 Conservation Road
Thunder Bay, ON, P7B 6T8
807-344-5857

© 2008 Lakehead Region Conservation Authority. All Rights Reserved.

Base Data supplied under Licence by Members of the Ontario Geospatial Data Exchange.
Map Produced in Co-Operation with the Province of Ontario
and Conservation Ontario

This map is for illustrative purposes only and is not reliable as a precise indicator of routes, location of features,
nor as a guide to navigation.



Legend

- Lakehead Source Protection Area
- LRCA Jurisdiction Boundary
- Quaternary Watershed Boundary
- Municipal Boundary
- Permit to Take Water
- Ground
- Surface
- Both
- Roads
- Highway
- Road
- Utilities
- Transmission Line
- Pipeline
- Railway
- Water
- Permanent Watercourse
- Lake
- Wetland
- River
- Creek/Stream

Agricultural Water Use by Watershed

| Quaternary Watershed | Cubic Metres per Year |
|----------------------|-----------------------|
| 2AA-01 | 20335 021 |
| 2AA-02 | 19709 812 |
| 2AA-03 | 345 426 |
| 2AA-04 | 24 931 |
| 2AB-01 | 58604 775 |
| 2AB-02 | 15628 741 |
| 2AB-03 | 40605 471 |
| 2AB-04 | 192 474 |
| 2AB-05 | 61 448 |
| 2AB-06 | 181 772 |
| 2AB-07 | 314 315 |
| 2AB-08 | 341801 615 |
| 2AB-09 | 27830 205 |
| 2AB-10 | 4730 017 |
| 2AB-11 | 161 163 |
| 2AB-12 | 87 573 |
| 2AC-01 | 19 674 |
| 2AC-02 | 1895 215 |
| 2AC-03 | 51 669 |
| 2AC-07 | 91 226 |
| 2AC-09 | 222 616 |
| 2AC-14 | 136 188 |

Agricultural Water Use is based on 2001 Census of Agriculture.
The total usage is the summary of water used by livestock
and for crop irrigation. (Agricultural Water Use in Ontario
by Watershed; Estimates for 2001 Report)

Water Withdrawals by Point Water Takings

| Point Source ID | Maximum Litres per Day |
|-----------------|------------------------|
| 14000000 | 1600000 |
| 14000012 | 4524 |
| 14000015 | 0 |
| 14000017 | 0 |
| 14000027 | 0 |
| 14000028 | 7200 |
| 14000034 | 5000 |
| 14000046 | 681000 |
| 14000047 | 177000 |
| 14000051 | 174500 |
| 14000059 | 261854 |
| 14000062 | 362000 |
| 14000065 | 68190 |
| 14000068 | 656640 |
| 14000072 | 68100 |
| 14000076 | 769120 |
| 14000079 | 1512000 |
| 14000084 | 3022500 |
| 14000086 | 13000000 |
| 14000088 | 562304 |
| 14000104 | 654630 |
| 14000108 | 102203 |
| 14000106 | 249186 |
| 14000110 | 654630 |
| 14000113 | 227000 |
| 14000114 | 0 |
| 14000116 | 654630 |
| 14000140 | 62419 |
| 14000156 | 56256 |
| 14000174 | 800000 |
| 14000187 | 68100 |
| 14000196 | 658000 |
| 14000220 | 1814000 |
| 14000221 | 227000 |

Point Source ID

| Point Source ID | Maximum Litres per Day |
|-----------------|------------------------|
| 14000234 | 658000 |
| 14000115 | 261014 |
| 14000174 | 7500 |
| 14000195 | 44510 |
| 14000200 | 21600000 |
| 14000209 | 5000 |
| 14000204 | 548000 |
| 14000205 | 8400 |
| 14000206 | 318200 |
| 14000207 | 96200 |
| 14000211 | 648000 |
| 14000212 | 265000 |
| 14000213 | 7726000 |
| 14000214 | 68100 |
| 14000215 | 254000 |
| 14000216 | 273120 |
| 14000217 | 363680 |
| 14000218 | 272700 |
| 14000219 | 5000 |
| 14000221 | 10000 |
| 14000222 | 263000 |
| 14000223 | 432000 |
| 14000224 | 288000 |
| 14000225 | 2160000 |
| 14000226 | 45460 |
| 14000227 | 45460 |
| 14000228 | 45460 |
| 14000229 | 45460 |
| 14000230 | 14400000 |
| 14000231 | 45460 |
| 14000232 | 45460 |
| 14000233 | 1296000 |
| 14000234 | 87024 |

Point Source ID

| Point Source ID | Maximum Litres per Day |
|-----------------|------------------------|
| 14001508 | 109104 |
| 14001511 | 116100 |
| 14001512 | 1296000 |
| 14001546 | 42500 |
| 14001603 | 30000 |
| 14001638 | 6524 |
| 14001639 | 9659 |
| 14001712 | 109100 |
| 14001713 | 64800 |
| 14001795 | 12479 |
| 14001796 | 12479 |
| 14001800 | 2000000 |
| 14001812 | 600000 |
| 14001811 | 3000000 |
| 14001813 | 27000 |
| 14001869 | 0 |
| 14001894 | 299520 |
| 14001900 | 3596400 |
| 14001969 | 57000 |
| 14001970 | 27000 |
| 14001971 | 163400 |
| 14001972 | 263000 |
| 14001974 | 263000 |
| 14001975 | 107000 |
| 14001992 | 217000 |
| 14002021 | 27000 |
| 14002022 | 28800 |
| 14002095 | 296000 |
| 14002099 | 54520 |
| 14002124 | 54520 |
| 14002220 | 327240 |

Prepared by Roman Augustyn
Printing Date: March 3, 2008
Projection Information:
Name: NAD 1983 UTM Zone 16N
Projection: Transverse Mercator
Datum: North American 1983
Lakehead Region Conservation Authority